

RIDGELEIGH

Ridgeleigh, one of the major patterns produced by A. H. Heisey and Co., reportedly was copied from a European glass pattern. It has been speculated that Heisey initially intended Ridgeleigh to be a minor pattern specializing in meeting the needs of the smoking public. The April, 1935, issue of HOUSE FURNISHINGS DEALER noted that, "... A. H. Heisey...(is) writing plenty of business on the line of heavy mitred ashtrays, which are done in reproduction of fine French glass. This is primarily a smoker's line, and includes also, a special cigarette box and candlesticks to match, just the thing for the man or woman who wishes to fix up the den in a really classy manner." The off-shore origin of the pattern was mentioned again in a December, 1935, ad by the Marshall Field Company of Chicago. The ad displayed the #1469 round cigarette holder and four square ashtrays with the following caption: "A cigarette outfit of pressed glass in the Cogwheel pattern is copied from an imported set. It is charming for the dinner or bridge table...\$1.00."

The pattern was introduced during the first half of 1935, and by mid-year, Heisey apparently had decided to expand Ridgeleigh to include a full line of tableware and bar ware. The June, 1935, issue of CHINA, GLASS AND LAMPS reported "...the much admired Ridgeleigh design ...increased to more than 40 items..." The article mentioned platters, salad bowls, plates which could be had with either a frosted or clear crystal rim, smokers' items, hors d'oeuvres pieces, bowls, candlesticks and "...many other pieces..." By the end of the year, the pattern had expanded to include a large and varied line of pressed ware and a line of blown stemware. Initially, Heisey assigned four pattern identification numbers to the line of pressed ware: #1469, #1469 1/4, #1469 1/2 and #1469 3/4. In 1939, the number of the 3 1/2 inch coaster was changed from #1469 1/2 to #1467, and that of the 4 inch coaster from #1469 3/4 to #1468. The pattern number 4069 was assigned to the blown stemware line, called Reis Ridgeleigh. The reasons for the fractional pattern numbers and the later changes in pattern numbers are obscure. No explanation was found in company records held in the Heisey Collectors of America archives.

In her book, THE COLLECTOR'S ENCYCLOPEDIA OF HEISEY GLASS 1925-1938, Neila Bredehoft states that Ridgeleigh is a "...very, very large pattern line." A quick look through the price lists, catalogs, and turn books (daily production logs) verifies the statement. Pages added to the price list 211-16 late in 1935 contain some 200 pieces of Ridgeleigh pressed ware (covers, stoppers and candlestick/candelabra parts are counted as separate pieces in the price list), and 13 stems in the #4069 line of blown ware (a 14th stem was added to the line in 1936.) By 1938, the number of Ridgeleigh pressed items had dropped to about 155; and the line of blown stem-

ware was discontinued at the end of that year. By 1941-42, price-listed pieces had decreased to about 100 and by 1944 only the #1467 (3 1/2 inch) coaster and the #1468 (4 inch) coaster made the price list. This price list stated that these two coasters were among the items Heisey would discontinue for the duration of World War II. These two coasters reappeared in the 1948 price list, then dropped from sight until the #1467 coaster surfaced again in the 1956 price list. A hand-written note in the archives indicates that the #1469 cocktail rest/coaster and the #1469 1/2 salt were sold to the trade in 1949, 1950 and 1951, although these items did not appear in the price lists issued for those years.

After 1941, production of the Ridgeleigh pattern dropped sharply. Turn book entries show that 40 items were produced in 1942, 10 in 1943, 3 in 1944, 1 in each of the years 1945 and 1946, 4 in 1949 and 3 in 1950. The items produced in these years are listed at the end of the section which follows. Mr. Fred Bosworth, a Heisey salesman between 1937 and 1952, offers an opinion about the fall in popularity of the Ridgeleigh pattern in his article entitled, "Birth of a New Pattern." "...A. H. Heisey and Co. had been struggling through the Depression years until lightning suddenly struck when they brought out the #1469 Ridgeleigh pattern. Heisey quickly became the hottest line on the market! ...Anchor Hocking* came out shortly thereafter with an almost exact copy of Ridgeleigh! It was sold mostly in chain stores (five and dime stores, we called them then), and they retailed the copy for about five and dime prices. Our stores being of a better type quickly started to drop Ridgeleigh as the copy was very close..." Bosworth then went on to describe how Heisey made use of another off-shore design, this time from Czechoslovakia, to create the Crystolite pattern and remain highly competitive in the market place.

Selected pieces of Ridgeleigh pressed ware were produced in color and Heisey cuttings and etchings were applied to some pressed pieces as well as the line of blown stemware. Other companies also applied etchings and other decorations to some Ridgeleigh items - they also made "new creations" by adding metal to Heisey blanks and combining several Ridgeleigh items to form lamps. The Imperial Glass Corporation reissued some Ridgeleigh pieces after it had acquired the moulds. And as mentioned above, other companies marketed glass patterns that were strikingly similar to Ridgeleigh and which were introduced at about the same time. These topics and others are covered in some detail in later sections.

* Actually Hocking Glass Company's Queen Mary pattern.

PIECES AND PRODUCTION DATES

The following is an illustrated listing of pressed and blown Ridgeleigh pieces, together with estimated production dates. These estimates are based on information from price lists, catalogs, turn books and advertisements. Covers, stoppers and candlestick/candelabra parts are not listed as separate pieces. Dates are inclusive.

No. 1469

BOWLS & NAPPIES

- | | |
|---|---------|
| 1. 4½" Nappy, Scalloped | 1935-37 |
| 2. 4½" Nappy, Cupped | 1935-42 |
| 3. 4½" Nappy, Bell | 1936-42 |
| Dropped from price lists by 1944; listed in 1943 turn book.
Also made with hole for lamp part. | |
| 4. 5" Nappy, Straight | 1936-42 |
| 5. 5" Nappy, Square | 1936-42 |
| 6. 8" Nappy, Square | 1936-42 |
| 7. 9" Nappy, Square | 1936-42 |
| 8. 8" Nappy, Bell | 1936-42 |
| 9. 9" Nappy, Cupped | 1936-38 |
| 10. 8½" Berry Bowl, Cupped | 1935-42 |
| 11. 9" Salad Bowl | 1935-42 |
| 12. 11" Salad Bowl | 1935-37 |
| 13. Dessert, 2-Handled | 1935-37 |
| 14. 10" Fruit Bowl | 1935-39 |
| Dropped from price list after 1939; listed in 1942 turn book. | |
| 15. 12" Fruit Bowl | 1935-42 |
| 16. 10" Floral Bowl | 1935-39 |
| Dropped from price list after 1939; listed in 1942 turn book. | |
| 17. 11½" Floral Bowl | 1935-42 |
| 18. 12" Floral Bowl, Oval | 1935-42 |
| 19. 14" Floral Bowl, Oblong
(With Swan Handles) | 1935-37 |
| 20. 14" Floral Bowl, Oblong
(Without Handles) | 1935-37 |

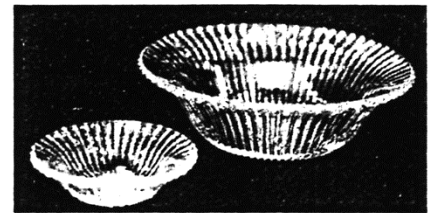


2, 9



1

4 not pictured



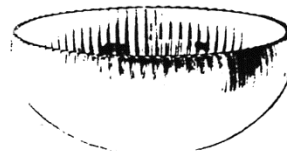
3, 8



5, 6, 7



10



11



12



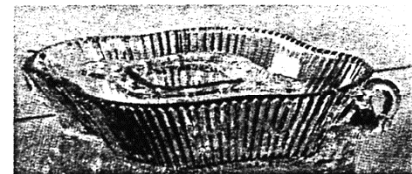
13



14, 15



16, 17



19



18



20

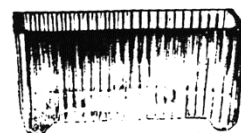
21. 13" Floral Bowl, Cone 1936-37
22. 8" Floral Box 1936-37
23. Orange Bowl 1937
Not seen in any price list.
Shown in Catalog 211-16 Supplement, 6/1/37.
24. 11" Beverage Bowl, Cone 1936-37
25. Beverage Cup, Cone 1936-38
26. 11" Punch Bowl 1936-39
Dropped from price list
after 1939; listed in 1940
turn book.
27. Punch Cup/Custard 1936-40
Dropped from price list
by 1941; listed in 1941
turn book.

PLATES

28. 6" Plate, Round 1936-38
1941-42
29. 8" Plate, Round 1935-42
30. 6" Plate, Scalloped 1935-36
31. 6" Plate, Square 1935-38
Dropped from price list
after 1938; listed in 1941
turn book.
32. 7" Plate, Square 1935-42
33. 8" Plate, Square 1935-38
Dropped from price list
after 1938; listed in 1941
turn book.
34. 9" Plate, Square Unknown
Not seen in catalogs and
not described explicitly in
price lists or turn books.
Shape and size suggest that
it might have come from a
mould adapted from the #1463
Quaker 9" square plate



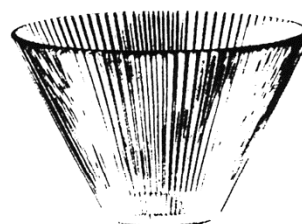
21



22



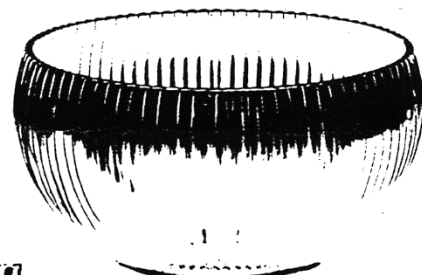
23



24



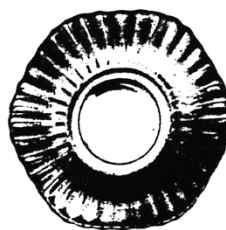
25



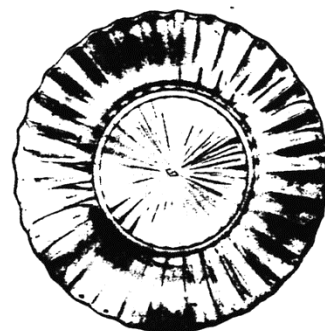
26



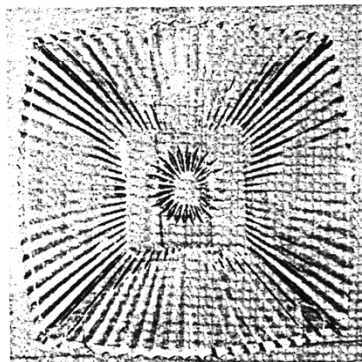
27



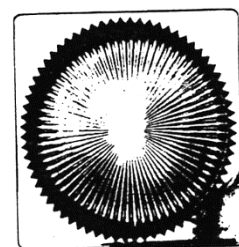
30



28, 29



34



31, 32, 33, 35

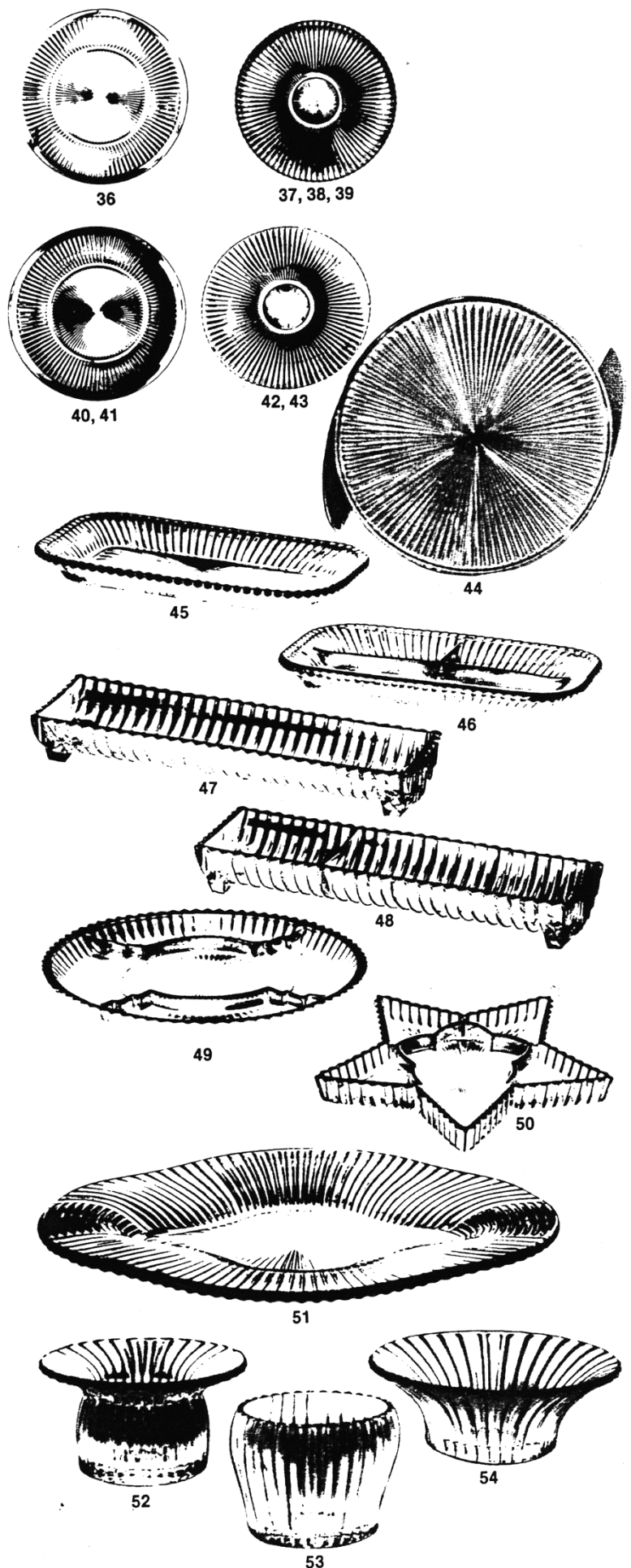
- | | |
|---|-----------------|
| 35. 10" Plate, Square | 1935-42 |
| 36. 14" Plate, Round | 1935-37 |
| 37. 11" Torte Plate | 1935-39
1942 |
| 38. 13" Torte Plate | 1935-42 |
| 39. 18" Torte Plate | 1936-37 |
| 40. 14" Torte Plate | 1935-38 |
| 41. 20" Torte Plate | 1937-39 |
| 42. 11" Sandwich Plate
Dropped from price list
after 1939; listed in 1941
turn book. | 1935-39 |
| 43. 13½" Sandwich Plate | 1935-42 |
| 44. 12" Cake Plate, 2-Handled | 1937-38 |

RELISHES

- | | |
|---|---------|
| 45. 10½" Oblong Tray | 1936-42 |
| 46. 10½" Oblong Tray, 3 Compartment | 1935-42 |
| 47. 12" Celery | 1935-42 |
| 48. 12" Celery & Olive | 1935-42 |
| 49. 11" Relish, 3 Compartment | 1935-42 |
| 50. 10" Relish, 5 Compartment
(Star) | 1936-42 |
| 51. Hors d'Oeuvres, Oval | 1935-37 |

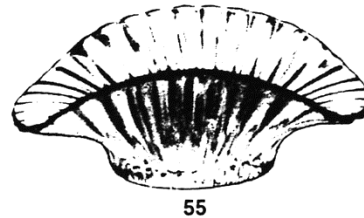
VASES

- | | |
|------------------------|---------|
| 52. Individual Vase #1 | 1936-42 |
| 53. Individual Vase #2 | 1936-42 |
| 54. Individual Vase #3 | 1936-42 |



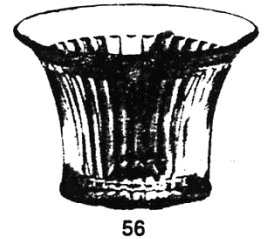
55. Individual Vase #4
Dropped from price list
after 1939; listed in 1940
turn book.

1936-39



56. Individual Vase #5
Dropped from price list
after 1939; listed in 1940
turn book.

1936-39



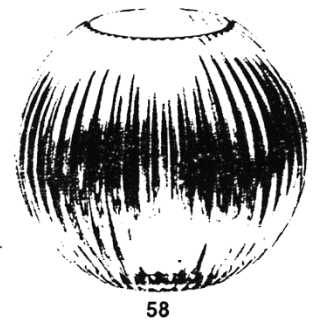
57. 3½" Vase
Dropped from price list
after 1939; listed in 1940
turn book. (Captions in
Catalog 214-19, 1939, are
reversed for the Individual
Vase #5 and the 3½" Vase.
This catalog page appears
in Vogel's Book III, P. 104.)

1936-39



58. 7" Ball Vase

1935-40



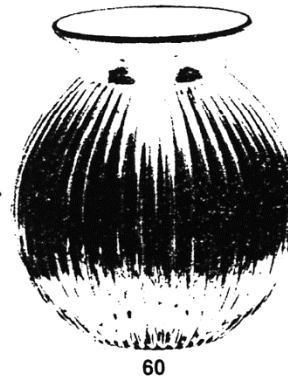
59. 7" Ball Vase w/Saturn Optic

1938-39

60. 7" Ball Vase, Flared Top

1936-40

59 not shown



61. 6" Vase
Notched for cord in 1939
special order for Rebel &
Frank, Inc., Cleveland, OH -
a lamp company.

1935-40



62. 6" Vase, Flared Top

1935-37

63. 9" Vase

1935-37

64. 9" Vase, Flared Top

1935-37



65. 10" Vase
Also made with 5/16" hole
in 1938 for lamp part.

1936-38

66. 10" Vase, Ground Top

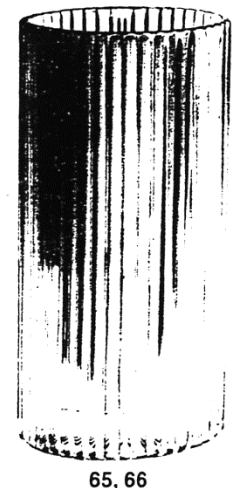
1936-37

67. P. E. Vase w/ 4 1/8" diameter
top

1942

68. 10" Vase made into a bottle
Special order for Rebel
& Frank, Inc., Cleveland,
OH - a lamp company. Also
seen w/stopper made into a
decanter.

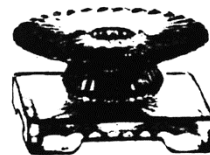
1939



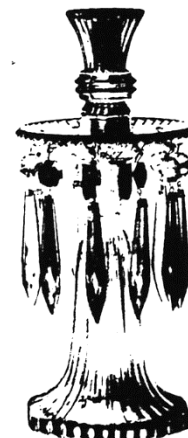
not pictured
67, 68

CANDLE HOLDERS

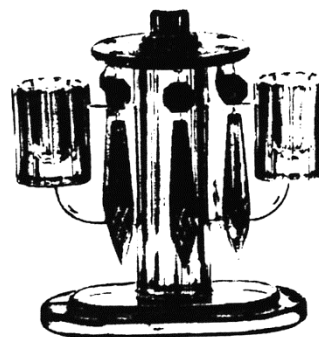
69. 2" Square Candlestick 1936-42
70. 7" 1-light Candelabrum, A-Prisms 1935-36
1941-42
71. 2-light Candlestick, A-Prisms 1936-42
(Felt & O'Grady in HEISEY
CANDLESTICKS note that this
piece was offered for sale
in stores as late as 1944.)
72. 2-light Candelabrum, A-Prisms 1935-36
73. 6" Candle Vase 1936-40
Fashioned from 6" Vase;
Candle Vase is about 4½
inches high.



69



70



71



72



73

SMOKING ITEMS

74. Ashtray, Round 1935-42
Dropped from price list by
1944; listed in 1949 turn book.
75. Bridge Ashtray, Round 1936-42
76. Ashtray, Square 1935-42
Listed in 1943 turn book.
77. Ashtray, Spade 1935-38
Dropped from price list
after 1938; listed in 1939
turn book.
78. Ashtray, Diamond 1935-38
Dropped from price list
after 1938; listed in 1941
turn book.
79. Ashtray, Heart 1935-38
Dropped from price list
after 1938; listed in 1941
turn book.
80. Ashtray, Club 1935-38
Dropped from price list
after 1938; listed in 1940
turn book.
81. 6" Square Ashtray 1935-42
82. Cigarette Holder, Round 1935-42



74



75



76



77



78



79



80



81



82

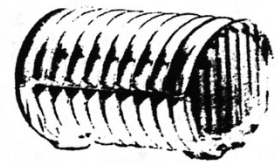
- | | |
|---|---------|
| 83. Cigarette Holder, Square
Dropped from price list
after 1938; listed in 1941
turn book. | 1935-38 |
| 84. Oval Cigarette Box w/Cover | 1935-37 |
| 85. 4" Cigarette Box w/Cover
Listed in 1943 turn book. | 1935-42 |
| 86. 6" Cigarette Box w/Cover | 1935-42 |
| 87. Individual Ashtray/Salt
Listed only as Individual
Salt in price lists issued
after 12/31/35. | 1936-42 |

TABLE ITEMS

- | | |
|---|---------|
| 88. Jelly, 3-Handled | 1935-39 |
| 89. Individual Jelly, Oval | 1936-42 |
| 90. Individual Oval Creamer | 1935-42 |
| 91. Individual Oval Sugar | 1935-42 |
| 92. Tray for Indiv. Sugar &
Creamer | 1936-42 |
| 93. Oval Creamer
Listed in turn books as
Hotel Creamer | 1935-42 |
| 94. Oval Sugar
Listed in turn books as
Hotel Sugar | 1935-42 |
| 95. Jam Jar
Not seen in any price list
or catalog. Listed in turn
book for weeks ending 11/7/36
and 12/15/36. A total of 425
pieces made in these two turns. | 1936 |
| 96. Mayonnaise | 1935-42 |
| 97. Mustard w/Cover | 1936-42 |
| 98. Marmalade w/Cover | 1935-42 |
| 99. 5" Lemon Dish w/Cover | 1935-42 |



83



84



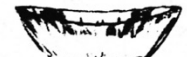
85, 86



87



88



89



90



91



92



93



94

95 not pictured
see mould drawing in
miscellaneous section



96



97



98



99

100. 6" Comport w/Cover
Dropped from price list
after 1938; listed in 1939
turn book. 1935-38



101. 6" Compote, Flared
Dropped from price list
after 1938; listed in 1939
turn book. 1935-38

102. 3 oz. Oil w/103 Stopper 1935-42



103. French Dressing Bottle
w/100 Stopper 1936-42

104. Salt/Pepper w/7 Top (glass) 1935-42

105. Salt/Pepper w/57 Top (metal) 1935-37

106. Salt/Pepper w/657 Top (metal)
Salt w/o Top listed in
1944 turn book. 1935-42



107. Individual Salt/Ashtray
Ashtray listing dropped
from price lists issued
after 12/31/35. (Same as
item #84.) 1936-42



108. 1/2 Gallon Ice Jug 1935-37
1940-42

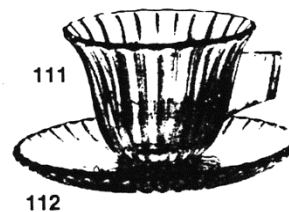
109. 1/2 Gallon Ice Jug 1936-?
Advertised in June, 1936,
AMERICAN HOME magazine; not
shown in catalogs and not
described explicitly in price
lists or turn books.



110. 1/2 Gallon Jug 1936-42

111. Cup
Dropped from price list
after 1939; listed in 1941
turn book. 1936-39

112. Saucer
Dropped from price list
after 1939; listed in 1942
turn book. 1936-39



112

STEMWARE, BARWARE & ACCESSORIES

- | | | |
|------|---|---------|
| 113. | 9 oz. Goblet
Dropped from price list
by 1944; listed in 1945
turn book. | 1935-42 |
| 114. | 5 oz. Saucer Champagne
Dropped from price list
after 1942; listed in 1943
turn book. | 1935-42 |
| 115. | 2½ oz. Wine | 1935-42 |
| 116. | 4½ oz. Sherbet | 1936-42 |
| 117. | 4 oz. Oyster Cocktail | 1936-42 |
| 118. | 4 oz. Claret | 1936-42 |
| 119. | 3½ oz. Cocktail | 1936-42 |
| 120. | 12 oz. Footed Soda
After 1938 listed as
Footed Soda/Ice Tea. | 1936-42 |
| 121. | 12 oz. Footed Soda
Not seen in catalogs &
not described explicitly in
price lists or turn books.
Identified from mould drawing. | Unknown |
| 122. | 5 oz. Footed Soda | 1936-42 |
| 123. | 8 oz. Old Fashion Toddy | 1935-42 |
| 124. | 2½ oz. Bar
Listed in turn books as
1½ oz. bar; Museum displays
1 oz. bar. | 1935-42 |
| 125. | 12 oz. Footed Ice Tea | 1936-39 |
| 126. | 12 oz. Soda, Straight | 1935-36 |
| 127. | 8 oz. Soda, Straight | 1935-36 |
| 128. | 5 oz. Soda, Straight | 1935-36 |
| 129. | 10 oz. Tumbler | 1935-36 |
| 130. | 5 oz. Bitters Bottle w/Tube | 1936-38 |
| 131. | Rock & Rye Bottle w/104 Stopper
Bottle w/o stopper listed
in 1939 turn book. | 1936-38 |
| 132. | Pint Decanter w/95 Polished
Stopper | 1935-38 |
| 133. | Quart Cocktail Shaker w/1 Strainer
& 86 Polished Stopper | 1935-38 |
| 134. | Ice Tub, 2-Handle | 1935-42 |
| 135. | Ice Tub Plate
Dropped from price list
after 1938; listed in 1939
turn book. | 1935-38 |



113



114



115



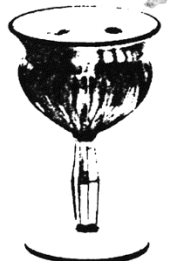
116



117



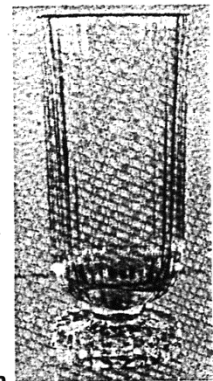
118



119



120, 122
122 see illustration
for 120



121



123



124

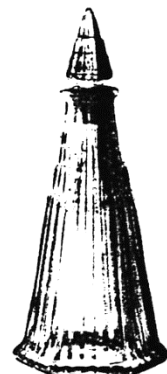
125-129
not pictured



130



131



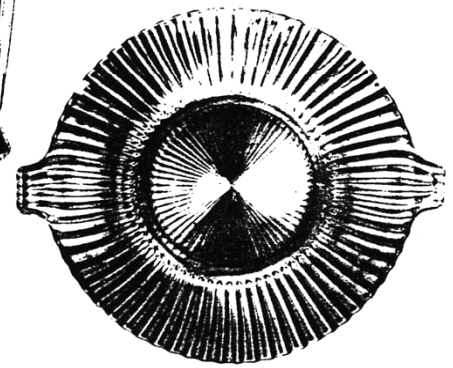
132



133



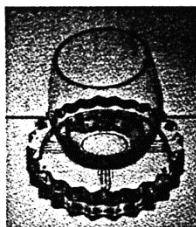
134



135

136. Cocktail Rest/Coaster 1935-38
1942

With concave side up, used
as Cocktail Rest for Roly Poly
Cocktail as shown here. With
concave side down, used as Coaster.



136

137. Special Cocktail Rest, Square 1938-42

138. Square Cocktail Rest 1942

May be same as 137 above.
(Cocktail Rest shown to the
right was made with a hole
for use as a lamp base.)



137, 138



139

139. 4 oz. Cologne w/105 Stopper 1936-38

140. 5 oz. Perfume w/Stopper 1936-37

141. 11" Centerpiece, 4-Compartment 1936

142. Special Lamp Base 1941
Not seen in price lists;
listed in 1941 turn book.



140

141, 142
not pictured



145

No. 1469 1/4

143. Oval Cigarette Holder 1935-42

144. Oval Ashtray, 2-Compartment 1935-37

145. 8" Vase 1935-38

146. 12 oz. Soda, Straight 1935-37

147. 6" Ashtray Underplate 1939-42



143, 144

146, 147
not pictured



148

No. 1469 1/2

TABLE ITEMS

148. 6" Jelly, 2-Handled 1935-42

149. 6" Jelly, 2-Handled, 2-Comp. 1935-42

150. 6" Bon Bon, 2-Handled 1935-42

151. 6" Cheese Plate, 2-Handled 1935-42

152. 7" Relish, 2-Compartment 1935-42

153. Individual Nut, 2-Handled 1935-42

154. Individual Nut, 2-Handled,
2-Compartment 1935-42

155. 8" Plate 1936-38

156. 5" Nappy 1936-42



150



149



151



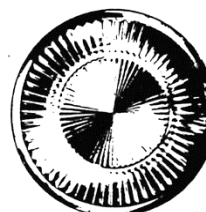
152



153



154



155



156

157. 14" Footed Salver 1936-37
158. 13½" Footed Torte 1936
Dropped from price list
after 1936; shown in Catalog
Supplement 211-16, 6/1/37.



157

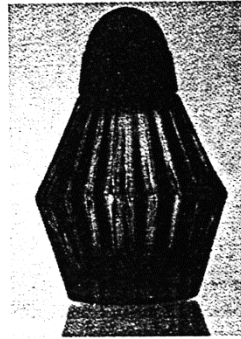
159. Salt/Pepper "Double Cone" 1936
Not seen in price lists or
catalogs; first listed in
turn books June, 1936, and
listed as late as 1950.



158

CANDLE HOLDERS

160. 3" Candlestick 1935-42
161. 1-Light Candelabrum, A Prisms 1936-37
Dropped from price list
after 1937; Candle Base listed
in 1943 turn book.



159



160

STEMWARE, BARWARE & ACCESSORIES

162. Goblet 1936-37
163. 12 oz. Soda, Cupped/Flared 1936
Dropped from price list
after 1936; shown in Catalog
Supplement 211-16, 6/1/37.
164. 3½" Coaster 1936-38
Renumbered 1467 beginning
1939. Heisey Ordergram issued
in 1937 suggested using coaster
as an ashtray and individual
jelly.



161



162 not pictured

165. 4 oz. Ice Cream 1938-42



164



165

SMOKING ITEMS

166. 4" Ash tray, F/P 1943
Dropped from price list by
1944; listed in 1943 turn
book.
167. Cigarette Holder w/Cover 1936
Dropped from price list
after 1936; shown in Catalog
Supplement 211-16, 6/1/37.



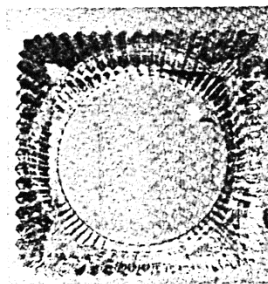
166



167

168. 6" Ash tray, Square
Listed in turn books as
late as 1949. 1939-42

169. "New Ash tray"
Not seen in price lists
or catalogs. Listed in turn
book for week ending 11/13/42. 1942



168

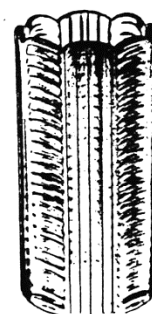
170 not pictured

MISCELLANEOUS

170. 11" Centerpiece, 4-Compartment 1937
171. 8" Centerpiece 1935-42
172. 11" Centerpiece 1935-40
173. 8" Vase
One turn, 32 pieces made
with Wide Optic, May, 1936. 1937-38
174. Puff Box w/Cover 1936-42
175. 8" Lamp Base, 2" Top
Made from 8" Vase 1936
176. Sundae 1941
Not seen in price lists
or catalogs; listed in Jan-
uary, 1941, turn book. Shop
may have produced the 4 oz.
Ice Cream on this turn and
entered "Sundae" in the turn
book.



171, 172



173



174

175 not pictured

176 not pictured as Sundae
see no. 160

No. 1469 3/4

177. 5 oz. Soda 1936-42
Listed as Soda/Orange Juice
after 1938.
178. 8 oz. Soda 1936-42
179. 12 oz. Soda 1936-42
180. 10 oz. Tumbler 1936-38
181. 4" Coaster 1936-38
Renumbered 1468 after 1938.



177, 178, 179



180

181 not pictured here
see no. 159

No. 1467

182. 3½" Coaster

1939-42
1944
1948
1956

182. Not pictured here See No. 164.

No. 1468

183. 4" Coaster
Listed in 1950 turn book.

1939-42
1944
1948

183. Not pictured here See No. 164.

No. 4069

BLOWN STEMWARE

1. 8 oz. Goblet
Dropped from price list
after 1938; listed in 1939
turn book.

1935-38

2. 8 oz. Luncheon Goblet

1935-38

3. 5 oz. Saucer Champagne

1935-38

4. 5 oz. Sherbet

1937-38

5. 4 oz. Oyster Cocktail

1936-38

6. 4 oz. Claret

1935-38

7. 3½ oz. Cocktail
Dropped from price list
after 1938; listed in 1939
turn book.

1935-38

8. 2½ oz. Wine
Dropped from price list
after 1938; listed in 1939
turn book.

1936-38

9. 2 oz. Sherry

1936-38

10. 1 oz. Cordial

1936-38

11. 5 oz. Footed Soda

1936-38

12. 8 oz. Footed Soda

1936-38

13. 13 oz. Footed Soda

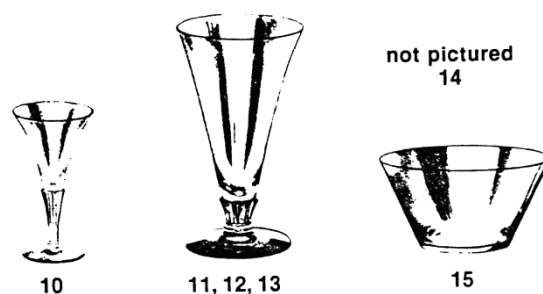
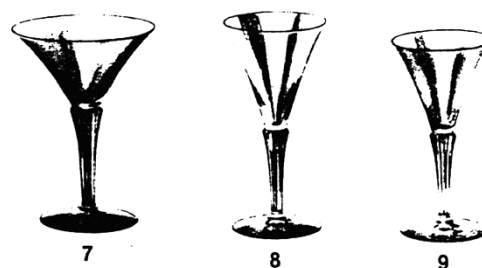
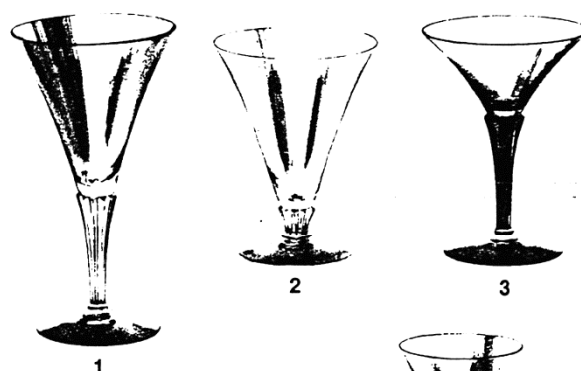
1935-38

14. 10 oz. Footed Tumbler

1936-38

15. Finger Bowl (#3335)

1936-38



not pictured
14

Production of the Ridgeleigh pattern dropped sharply after 1941. Turn book entries show that the following 40 items were produced in 1942: #1469 -- 6" square ash tray, saucer, individual salt, sherbet, goblet, goblet-cupped, salt, 4½" nappy, 3 oz. oil, creamer, 6" plate, individual vase #3, P. E. vase 4 1/8" diameter, 12 oz. footed soda, oval bowl, fruit bowl, torque plate, 9" square nappy, 4-compartment (star) relish, 2" square candlestick, 8" plate, cheese plate, lemon dish and cover, 13" torte, 14" sandwich, special square cocktail rest, 10½" 3-compartment relish, 12" celery and olive, 9" salad bowl, 5" nappy, individual square ash tray; #1469½ -- 6" square ash tray, 5" nappy, new ash tray; #1469½ -- 6" square ash tray, coaster. The following 10 items were listed in

the 1943 turn books: #1469 -- 4½" nappy, 4" cigarette box, ash tray, saucer champagne, goblet, salt; #1469½ -- candle base, 4" round ash tray; and the #1467 and #1468 coasters. In 1944, only three items were listed in the turn books -- the #1469 salt and cupped goblet, and the #1469½ salt. In 1945 and 1946, only one turn book entry was found in each year -- #1469 goblet in 1945 and the #1469½ salt in 1946. In 1949 production was limited to the #1469 individual bridge ash tray, the #1469½ salt and the #1467 coaster. The 1950 production consisted of the #1469½ salt and the #1467 and #1468 coasters. (Note: Turn books for the period 3/46 through 2/49 are not available in the HCA archives. Therefore, the numbers listed above show only the downward trend in production, not the absolute quantities/pieces produced.)

RIDGELEIGH, MARKED AND UNMARKED

On the Ridgeleigh items that are marked, the Heisey trade mark is located in or on the bottom. Most often the mark is found face up at the center, otherwise it is located at the center, but underneath the base or foot. The exception is the #1469 1-light candelabrum which is marked on the clear area beneath the bobèche. The only piece marked off-center is the #1469¼ oval two-compartment ash tray and the only pieces that boast two marks are the #1469½ 7-inch 2-compartment relish and the 2-compartment individual nut which have marks on either side of the divider in the bottoms. Don't be surprised if you find a Ridgeleigh piece with the "old" large Diamond-H trademark.

Some Ridgeleigh moulds were fashioned from the moulds for the earlier patterns which bore the large Diamond-H. For example, the mould for the #1469 10½" oblong tray came from the #473 Narrow Flute with Rim 10" comb and brush tray mould. The plunger for this mould carried the large Diamond-H trademark.

Since the majority of the Ridgeleigh pattern is marked with a Diamond-H, only those pieces that have not been seen bearing the trademark are listed below:

#1469

14" Oblong floral bowl, with and without swan handles
10½" Oblong tray, 3 compartment
7" Ball vase
7" Ball vase, flared top
2" Square candlestick
2-light Candlestick
2-light Candelabrum
Oval cigarette box with cover
6" Comport with cover (cover marked)
6" Comport, flared
3 oz. Oil with stopper
French dressing bottle with stopper
½ gallon Jug
2½ oz. Wine
6 oz. Bitters bottle with tube
Rock and rye bottle with stopper
Pint Decanter with stopper
Quart Cocktail shaker with strainer and stopper
4 oz. Cologne with stopper
5 oz. Perfume with stopper

#1469½

6" Jelly, 2-handled, 2-compartment
3" Candlestick
3½" Coaster
6" Square ash tray, plain bottom

4" Coaster

#4069

Reis-Ridgeleigh -- all pieces

RIDGELEIGH IN COLOR

For a short time, probably during 1936 and 1937, Heisey produced selected pieces in Sahara and Zircon. (Production of the Sahara color ended in 1937 and Zircon was in production between 1937 and 1939.) No mention of Ridgeleigh in these colors is found in the price lists or turn books, including the price list supplement issued in 1938, listing patterns and pieces made in Zircon. Therefore, information on Ridgeleigh production in these colors has been drawn from advertisements and eye-witness accounts. (Note: turn books for the period from the end of December, 1936, through May of 1937 are not available in the HCA archives.)

Early in 1937, Heisey released an ad announcing that several pieces of Ridgeleigh were available in Sahara and Zircon. The ad read, in part, "GANGWAY ! ... IT'S HEISEY AGAIN ! Three special promotions for Springtime in the famous 'Ridgeleigh' pattern. In two glorious Spring colors and shimmering crystal. Be the first to show 'ZIRCON', a new aquamarine color that blends with all of nature's hues." The April 1937, issue of CROCKERY AND GLASS JOURNAL noted that "...coasters from the Ridgeleigh line...made in Sahara gold and Zircon as well as crystal...ash trays either in crystal or Zircon..." had been put on the market by the A. H. Heisey & Co.

The following pieces were produced in both Sahara and Zircon: the candle vase, 12 inch oval floral bowl, covered cigarette box, square ash tray and round cigarette holder in #1469, and the coaster, 7 inch oval divided relish and the 8½ inch vase in #1469½. The #1469

2-inch square candlestick was made only in Zircon and the #1469 square cigarette holder in Sahara only. The #1469 12-inch celery and a Ridgeleigh divided relish have been seen in Zircon also. These two pieces were mentioned in letters quoted in the May and June, 1975, issues of the HEISEY NEWS.

Two Ridgeleigh items have been seen in Cobalt -- the #1469 round cigarette holder bearing Heisey's Diamond-H trademark, and candle cups of the type used on Ridgeleigh candelabra. Neila Bredehoft, in her book, THE COLLECTORS ENCYCLOPEDIA OF HEISEY GLASS, 1925-1938 states. "...the cigarette holder is sometimes seen in cobalt and thought to be Heisey rather than Imperial." Also, Ridgeleigh candle cups in both Cobalt and crystal were used on several styles of Krome-Kraft chrome candelabra produced by Farber. While there is no mention in the Heisey price lists or advertisements of the candle cups having been produced in Cobalt, these are obviously out of Heisey moulds. It's quite possible that Heisey produced Cobalt candle cups as a special order for Krome-Kraft, in which case, the transaction could have been handled by letter order and invoice.

In addition to the colors mentioned above, the Heisey Museum has on display a #1469½ salt (double cone shape) in Amber, a piece that belongs in the seldom-seen category. Collectors should be aware that Bryce acquired the moulds and the machine for the #1469½ salt from Heisey and produced items marked with the Diamond-B. The Museum also has on display the #1469 10 inch 5-compartment (star) relish in Experimental Light Blue (aka Trial Blue) and a pair of #1469 2 inch square candlesticks in a dark blue-green color.

RIDGELEIGH AND RARITY

The beginning collector who constantly trips over the #1469 2 inch square ash trays at shows and flea markets may develop a mistaken idea about the availability of the Ridgeleigh pattern. He or she may assume that most Ridgeleigh is reasonably plentiful -- questionable assumption! But before trying to pinpoint what may be truly rare, let's examine why some pieces, like the little ash tray, are relatively easy to find.

Heisey offered to the trade a number of boxed Ridgeleigh gift sets. They were attractive, inexpensive and well received. Many of these were combinations of smoking accessories -- a cigarette box or holder with four square,

round, or bridge ash trays. Others were coaster sets, mayonnaise sets (bowl, underplate and ladle), or luncheon sets (cups, saucers, round luncheon and dessert plates). Some Heisey price lists offered gift boxes (priced separately), for individual pieces, most notably the #1469 star relish. The collector will find that it is these once-boxed items that turn up most often, a good indication that Heisey-boxed gift promotions were very successful.

Where rarity is concerned, Ridgeleigh has one thing in common with all but a few other Heisey patterns -- in color it is not plentiful. Here again, as with other patterns, some pieces made in color are seen more often than others. In

Ridgeleigh, the smoking accessories and coasters in Zircon and Sahara will be seen most often. All other production pieces made in these colors will be hard to find. Pieces in Cobalt and Amber are rarely seen and the experimental colors, such as Experimental Light Blue (aka Trial Blue) and the dark blue-green (dark Zircon?) can be considered extremely rare.

All of the #4069 Reis-Ridgeleigh blown ware will require a good deal of searching to locate. Though the footed tumbler and sodas are hardest to come by, it is the stemmed goblet, wine and cordial that are most sought by collectors. The Reis-Ridgeleigh design lent itself readily to cut decorations and can be found with Heisey cuttings as well as cuttings applied by others. Uncut pieces are no easier to find than pieces decorated with cuttings. The cutting that seems to turn up most often is the #872 Mariemont.

Except for most nappies, small serving pieces, and gift set items mentioned earlier, all other Ridgeleigh pieces can be considered elusive. But which are the most elusive? Among the pressed stemware the #1469 4 oz. claret and the #1469½ ice cream appear to be scarce. The #1469½ cupped 12 oz. soda and the #1469 12 oz. footed soda (shown as item number 121 in the section on Pieces and Production Dates), among tumblers and barware, are extremely difficult to locate. Of the bowls, only the #1469 orange bowl can be considered very, very rare. The #1469 oblong floral bowl with swan handles, particularly with the flower frog, would be an excellent find. Most of the very large trays are seldom seen, but the #1469½ footed salver and the footed torte plate are quite scarce. Because of the limited number

produced, the #1469 jam jar probably qualifies for a very rare classification. According to records in HCA, only 425 of the jam jars were produced. Though all candlesticks and holders are desirable, the #1469 2-light candelabrum is seen less often than the others. The #1469 7-inch ball vase with the flared top, the #1469 10-inch vase and the #1469½ 8-inch vase, out of the large selection of vases offered by Heisey, are difficult to locate. The #1469 ball vase with saturn optic and the #1469½ 8-inch vase with wide optic probably qualify for the seldom seen classification. Of all the bottles and jars, the #1469 5 oz. perfume is the rarest followed by the #1469 bitters bottle and the #1469 cocktail shaker. The #1469 10-inch dinner plate is also sought after and hard to find in good condition. Finally, both styles of Ridgeleigh pitchers will take a good deal of searching to find, but the #1469 ½-gallon ice jug shown as item 109 in the section on Pieces and Production Dates will be the most difficult to uncover.

Please realize that the above breakdown of hard-to-find and rare pieces is very subjective. It is based on only one collector's experience in tracking down Ridgeleigh over a 15 year span. It is intended only as a guide. Also note that the degree of rarity is not always reflected in the price of an item. Demand still dictates the monetary value. The #1469½ 4 oz. ice cream may be almost impossible to find, but the goblet or wine in the same style will still command a higher price on the dealer's table.

DECORATIONS ON RIDGELEIGH

A. BY HEISEY

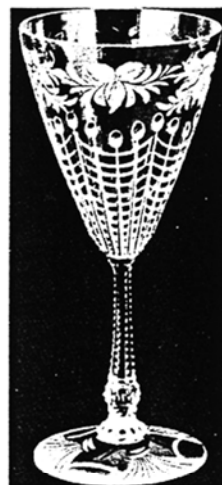
Several cuttings were used to decorate the #4069 stemware line and selected pieces in #1469 and #1469½ pressed ware. Etchings were used on selected pieces in the line of pressed

ware. Heisey cuttings and etchings, together with the pieces on which they appear and estimated dates they were used are listed below:

- CUTTINGS

- #848 BOTTICELLI 1936-42
Applied to #4069 Stemware.
- #855 FUSCHIA* (Rock Crystal) 1937
Applied to #1469½ Footed Salver.
- #870 ST. ALBANS* 1936
Applied to #4069 8 oz. Goblet
- #871 SOPHISTO 1936-38
Applied to #4069 Stemware and
#1469 6 and 8 inch Square Plates.
- #872 MARIEMONT 1936-39
Applied to #4069 Stemware and #1469
6, 7, 8 and 10 inch Square Plates
and 8½ inch Berry Bowl.

Right: #848 Botticelli
Above: #855 Fuschia*



#873 EDWARDIAN 1936-38
Applied to #4069 Stemware.

#874 EXOTIQUE 1936-38
Applied to #4069 Stemware and #1469
6, 7, 8 and 10 inch Square Plates.

#875 SYLVIA 1936-38
Applied to #4069 Stemware.

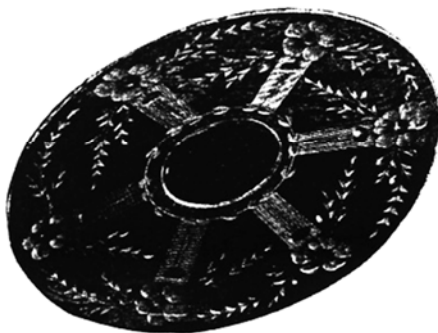
#877 PUEBLO (Rock Crystal & Gray) 1936-38
Applied to #4069 Stemware.

#882 YORKSHIRE 1936-38
Applied to #4069 Stemware

#884 VINCENT* 1936
Applied to #1469 2-Light
Candlestick/Candelabra
No Illustration Available

* Factory name for cutting unknown; name
supplied by HCA.

#873 EDWARDIAN



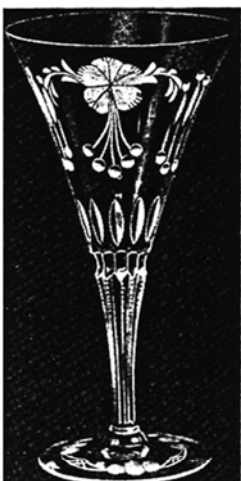
#870 ST. ALBANS*



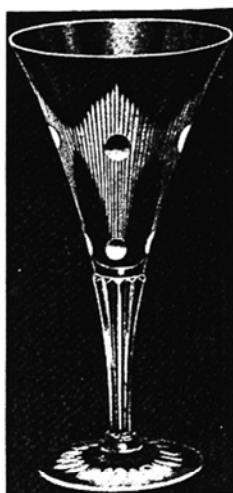
#871 SOPHISTO



#872 MARIEMONT



#874 EXOTIQUE



#875 SYLVIA



#877 PUEBLO



#882 YORKSHIRE