

Heisey Puff Boxes—*Eric Tankesley-Clarke for Great Plains Heisey Club*

Puff boxes appeared in Heisey price lists almost from the beginning. The first ones were produced about 1897. By about 1930, nearly all had been dropped, and only a few were introduced after 1930. Heisey ended its puff box production about 1948.

Because some price lists and catalogues have never surfaced, we can't know what every puff box looked like, or even whether we have a complete list of every Heisey puff box. But there are still over 30 different known ones for collectors, enough to challenge, not so many as to overwhelm.

Not every Heisey puff box was made with a Heisey glass cover. Some, mainly early ones, were made primarily to be sold to other companies who added covers of metal, ivory, horn, wood, or other materials, from simple to elaborate. The cover determines whether a piece is a puff box or a hair receiver. Heisey called it a puff box, with or without cover, unless fitted with a cover with the characteristic hole in the center.

Here, in more-or-less chronological order, are Heisey's puff boxes, such as we know them. Some pictures and information from *Heisey Herald* (November, 2006), *Heisey News* (August, 1984), and Walter Ludwig. Measurements are approximate diameters at widest points.

1. #1280 Winged Scroll



About 1897; discontinued by about 1903.

Made in

Emerald, Ivorina Verde, Opal, and probably in crystal. Canary is also possible. 3½"D x 2¼"H without lid (shown with lid). This puff box is taller and narrower than most other Heisey puff boxes. Not marked. A frequently mentioned look-alike is **Jefferson's Plume & Bar**. I have seen the Jefferson piece in crystal and custard, but it may be available in other colors, too.

2. #57 Virginia (Sweet Scroll)

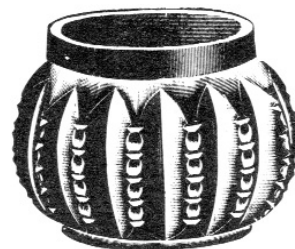


About 1897-1900. Made only in Opal. These are probably among the first pieces of Heisey ever marked. The Diamond H is more square and the H has serifs. Also, the

pattern number "57" appears next to the Diamond H. The mark appears on the cover, not the base, so may be overlooked. Quite hard to find. It is possible that some were unmarked. If numbered, be sure that the number is "57" for the puff boxes; each Sweet Scroll shape had a unique number.

3. #1250 Groove and Slash

About 1900. Possibly not made with a glass cover, or at least not with one specific to the pattern. Note the slashes on the ribs alternate between small diamonds and larger ovals. Marked or unmarked.



1250 PUFF, NO COVER.

4. #4 Zipper

About 1897-1910. 3¾". Made only in crystal. May be marked or unmarked. Covers very hard to find. The same cover was used on at least this one and the following, and quite probably on others, too. Most #4's were probably sold without covers to other companies.



NO. 4 PUFF AND GLASS COVER
GROUND BOTTOM

5. #5 Caitlin Rose (formerly called Puntty & Zipper)



NO. 5 PUFF AND GLASS COVER
GROUND BOTTOM

About 1897-1910. 3¾". Made only in crystal. Same cover as for #4 Zipper. Marked or unmarked. Most were probably sold without covers to other companies.

6. #7012 Squared Fan



Probably before 1913. 4". Numbered by Vogel. No catalogue exists that shows this puff. It is roughly the same size as #4 Zipper and #5 Caitlin Rose. It

possibly shared their cover, but was probably sold mainly without cover to other companies. Seems to always be marked. Both this one and the following one are moderately easy to find, indicating a modest period of production. See also entries for #1128 & #1139 and for #2 & #3 at the end.

7. #7013 Thumbprint & Angle

Probably before 1913. 4". See the comments for #7012 Squared Fan.



8. #7020 Grid

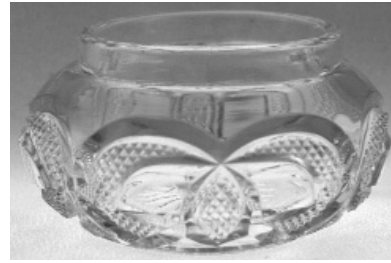
Probably about 1900-1910. 4³/₄". This is one of three larger puff boxes numbered by



Vogel. This and the following two form a group of larger, ornate puff boxes, all marked, and none illustrated in any known extant catalogue or price list. See #1122-1124 on last page.

9. #7052 Diamond Grid

4³/₄". Same comments as for #7020.



10. #7070 Pineapple and Heart

4³/₄". Same comments as for #7020.

11-13. #16 Susannah, #17 Colonial, & #25 Colonial

#16 about 1910-1924; #17 and #25 about 1910-1930. 4¹/₄", 5", & 6". Even



though these three share the same design and patent, the name "Susannah" applies only to the smallest, #16. Though made for a few years less, #16 is easily the most common of the three; #25 is a little hard to come by. Both #16 and #17 were made with glass covers, either solid for puff boxes or perforated for hair receivers. #25 appears to have been made only as a puff box. Crystal only. Bottoms are always marked. The #16 covers are occasionally marked, although not often; marks not seen on #17 or #25 covers, but possible.



14. #7111 Colonial

Probably 1910's or slightly earlier. About 4", similar to the four small ornate ones (#4, #5, #7012, & #7013), but taller. Takes the same size

cover. A #13 puff box (about 1900-1910) appears in a few price lists, priced the same as #4 Zipper and #5 Caitlin Rose. If #7111 was sold at the same time, it would probably have been about the same price. A 2007 Heisey News article mentions a #10 puff box said to come under the same patent as the other colonial puff boxes; without saying so, the description seems to equate it with #7111. This is the only mention of #10 that I have found; it does not appear in price lists or catalogues, so I cannot confirm that ID. See entry for #10 and #13 on last page. Marked. Seen only in crystal.

15. #356 (alias #353) Medium Flat Panel

About 1910-1924. 4¼". This puff box has long been assumed to be a variant of



the #353 Medium Flat Panel soap dish. In researching price lists, I found confirmation of that, but also a surprise in its number. Until about 1913, price lists describe both a #353 soap dish and a #353 puff box. But soon after, the puff box's number was changed to #356, and it remained that way for the rest of its Heisey run. Surprisingly hard to find, given its dates. The soap dish is more common. I have seen the puff box frosted over all more often than not. Crystal only. Marked on the inside bottom.

16 & 17. #433 Greek Key



About 1913-1917. This puff box came in two sizes, about 4½" and 5¼" diameters, corresponding in size to the #16 and #17 puff boxes. The

smaller size in Greek Key was called the No. 1 puff and the larger one was called the No. 3. If there was ever a No. 2, there is no record of it. Each size took the same cover as the corresponding colonial puff box. Marked on the inside bottom. Crystal only.

18. #433½ Greek Key

About 1913, possibly a year or two after. 5½". This is Greek Key No. 4, shown in only one existing price list and Cat. 75. It is difficult to find today. Marked. Crystal only.



19 & 20. #350 Pinwheel & Fan

Guessing about 1912-1928. These puff boxes come in two sizes, 4" and 5". The 5" size seems to be hard to find. The 4" size is fairly common. Neither one shows up in any

price list or catalogue. However, the abundance of the 4" one indicates a long production time. Since other pieces of #350 date from about 1910 or 1912, and since most puff boxes were dropped by 1928, it likely falls within part or all of that range. It is also possible that the puff boxes were offered under a different pattern number (not unusual for Heisey), possibly one or



two of the numbers of unknown appearance at the end of this list, although none of them seem an obvious fit. Marked. Probably crystal only.

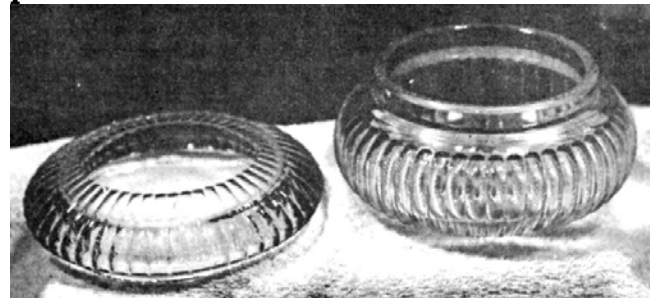
21. #473 Narrow Flute with Rim straight-sided puff box



About 1915-1922. 4¼". There is a soap dish in the same shape, but with ridges on the inside bottom. The soap dish does not appear in any existing price list; either one is a good

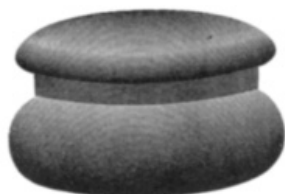
find. Marked on inside bottom and on cover. Crystal only.

22. #473 Narrow Flute with Rim rounded puff box



Probably made only a brief time between 1915 and 1925. This puff box does not appear in any known price list or catalogue, but it is said there are Heisey records of it and a hair receiver. It is supposed to be 5", making it about the size of the #17 colonial puff box. Probably marked.

23 & 24. #1183 Revere and #1184 Yeoman rounded puff boxes



Puff and Cover
Ground Bottom

About 1922-1924. These two are identical but for size. #1183 is about 4¾", and #1184 about 5½". The catalogues show rounded covers, which

have been flat cut on both examples in the display. Marked inside bottom. Crystal only.



25. #4301 unnamed
Made in the 1920's, possibly starting in the 1910's, until at least 1941. About 4". Made as a puff box and a hair receiver.

Being blown, these are not marked, so may go unrecognized unless decorated with Heisey cuttings or in sets with known Heisey pieces, such as the #515 Taper or #4042 Johnson colognes. Ground bottom. One casual reference in an early Heisey News to a #515 puff box probably refers to this one. Crystal only.



4301
Puff Box

26 & 27. #1183 Revere and #1186 Yeoman straight-sided puff boxes



These two puff boxes share identical 4" bottoms and inserts. #1183 Revere

has a flat cover and #1186 Yeoman has a pointed knop cover. Sold with or without inserts; no other Heisey puffs had inserts. Late 1920's. The #1186 is known in crystal, Flamingo, Moongleam, and Hawthorne, with or



without diamond optic. No other puff comes in diamond optic. The #1183 is probably only known in crystal, without optic. Possibly intended to accompany the pointed-stoppered (#485-486 and #489-490) or flat-stoppered (#487-488 and #491-492) Hexagon Stem or Karen colognes.

28 & 29. Footed puff boxes, number unknown (1183 and 1184?), unnamed

Only two known. The HCA Museum has one with a cover similar to that on the #1186



puff. The one in this display has a flat cover similar to the one on the #1183 straight-sided puff. Both covers are the same size, slightly larger and flatter than the #1183 or #1186 covers, apparently not using the #1183

or #1186 moulds. The 4¾" bodies seem to be footed counterparts to the #1183 rounded puff box. The thick, upright collars and loose-fitting lids on both leave no doubt these were puff boxes. Since there are two footed puffs with lids the same size and the lids are not interchangeable with other Revere or Yeoman lids, it is likely the lids are original to the puffs. No price list or catalogue lists a

footed puff. Because these puffs echo both the six-sided stems and the pointed and flat stoppers used in the #485-486 and #487-488 Hexagon Stem colognes, they perhaps were intended to be used with them for vanity sets. Probably #1183-4-5-6-7-8, but possibly other numbers altogether. Probably made in the mid-1920's. Marked. Known only in crystal.



30. #50(?) made for Hope Glass Co.



Unknown production date; probably 1930's or later. 4½". The one shown came from the collection of Paul Fairall, who identified it. Six plain flat sides, separated by triple vertical ribs. Ground bottom. HCA owns the mould.

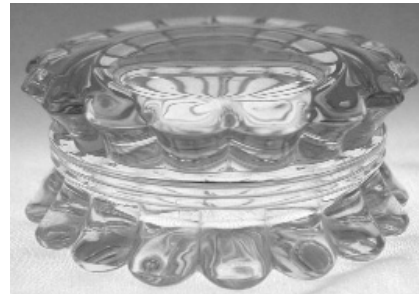


31. #1469½ Ridgeleigh

This "puff box" is simply two 5" nappies, one nappy turned upside down and placed on the other. However, it was actually shown and sold as a puff box. The puff box illustrations only ran from 1935-1937, but the nappies were available longer. This illustration shows a non-Heisey look-alike (above right); the genuine Heisey one has concentric circles, while the look-alike has a star figure and ground bottom.

32. #1504 Regency

1938 to early 1940's. 5" diameter (but 4" excluding flared flutes). #1504 Regency was



always closely allied with Crystolite. The top is unusually heavy compared to the bottom. See the lamp in

the display for the puff box lid used as part of the construction.

33-35. #1503 and #1503½ Crystolite



The straight-sided, 4¾" puff box (above left) is the #1503, made from about 1938 to 1948. It was the last puff box made by Heisey. It was also sold as a small candy box. The rounded, 3¾" puff box (above right) is #1503½, and was only listed in the early 1940's; the rounded one is not marked. The bottom of the rounded one has a flat edge and the cover fits over a raised, flat inner lip.



Another Crystolite puff box, 4" across, uses a slightly altered version of a nappy. It has an inner ledge and the lid fits on top of and inside the scalloped edge. It was sold to another

company for them to add their own covers.

Color in Heisey puff boxes—Color collectors have it easy, maybe too easy, in this group. #1280 Winged Scroll, #57 Virginia (not made in crystal), and #1186 Yeoman are the only patterns known in colors. No color made after 1928 is known to have been used in puff boxes.

If only we knew what they looked like—the unillustrated Heisey puff box list

#1128 and #1139 puff boxes

About 1897; discontinued by 1903. These appear together in price list 60, and are priced the same as #4 Zipper and #5 Caitlin Rose and also had glass covers. This pair is one set of candidates for the true numbers of #7012 and #7013, items 6 and 7. See also #2 & #3 below.

#1122, #1123, & #1124 puff boxes

About 1897; discontinued by 1903. Another group known only from one price list. Sold without covers, and possibly never sold with glass covers. The list gives no prices, so sizes can't be guessed. But there are three puff boxes in a row, and we know of three larger ones, #7020, #7052, and #7070 (items 8-10), that clearly come from about the same time, very good candidates for the Heisey numbers.

#8 & #16½ puff boxes

Two more dating from about 1897 to no later than 1903. Some pieces of #305 Punty and Diamond Point appeared in a list specifically for selling to companies that mounted glass with silver. When in this list, the pieces were mentioned under the earlier number for this pattern, #16. The puff box with #16½ appears in the same list, so there may be some unmarked variant of Punty & Diamond Point that has gone unrecognized. Or #16½ could refer to some other design altogether. (There has been some speculation that #16½ is the same as #7111, but #16½'s appearance in the same list with #16 Punty & Diamond Point makes this seem unlikely, although not impossible.) We have no clues what #8 looked like.

#10 & #13 puff boxes

The #13 puff box is one of three of unknown appearance but known to be the same price as other small puff boxes. #7111 (item 14) is the only known colonial puff box of similar size for which we do not have an original Heisey number. #13 fits in sequence with #16, 17, & 25 as far as size. This makes #13 a candidate for the true number for #7111. However, see the entry for #7111 for further comments on #10 and #13.

#2 and #3 puff boxes

These seem to have been made only from about 1908-1910. They had glass covers. They were small, because they were priced the same as #4 Zipper and #5 Caitlin Rose, which were still being made. This makes them another pair of candidates for #7012 and #7013. See also #1128 & #1139 above.

#1422 puff box

This puff box is known only from moulds. It may have been square. From the pattern number, this probably dates from about 1933; whether it was actually produced is unknown. There was a corresponding cologne.

Appearance

?

Unknown

#1812, 1812A, 1812½, & 1812½A puff boxes made for Hope Glass Co.

Handwritten notes in 1941 and 1942 lists mention the 1812's. HCA owns the moulds.

#1929 puff box

Unknown date. Mould exists.

#13 & Diamond puffs

In context, these seem to be puffs, not puff boxes. That is, each appears to be the actual powder applicator, or at least part of it, not a puff box to contain the powder. In Price List 60 where these are mentioned, on the same page there are listed eight consecutive "puff boxes," each one numbered, including a #13 puff box. Immediately following the "puff box" group is an unnumbered item simply called "Diamond puff." In addition, on the same page is an entry for a #13 puff, completely separate from the #13 puff box entry. Since there is both a #13 puff box and a #13 puff and since "Diamond" is the only other item described only as a puff, these two items were probably just glass handles to which the actual puff applicator could be attached. Unfortunately, they only appear in the part of Price List 60 which gives no prices; one would expect handles to have low prices. Later price lists, and perhaps all catalogue illustrations, add to the confusion, because they often simply said "puff" when it was clear that "puff box" was the meaning.