

Jean's Jelly Jubilee: Heisey's One-handed Jellies and Assorted Other Jellies

In honor of Jean Will's 90th birthday, an overview of one-handed jellies, with a sampling of other kinds of jellies
Eric Tankesley-Clarke for Great Plains Heisey Club

Early patterns often had two forms of jellies: footed and one-handed. Within each form, there were frequently variants. Footed jellies might be "straight" (round, just out of the mould), or flared, or slightly flattened to be shallow, or with crimped edges. #325 Pillows



#1255 Pineapple & Fan footed jelly

took it one step further and even had a 7" size, almost completely flattened out (but not quite), which they then called a footed fruit dish, rather than a footed jelly. There were six different footed jellies in. #300 Peerless alone.



#300 Peerless footed jellies



Most early footed jellies were "high footed." But later footed jellies were often "low footed," and a few patterns had both.



#305 Punt & Diamond Point (high) footed jelly (left);
#351 Priscilla low-footed jelly (also used in #300 1/2 Peerless)

One-handed jellies often came both round and three-cornered. Both one-handed shapes were made from the same mould, a paddle being used to fold up the sides to make the three-cornered style. Crimping was less common in the one-handed jellies, but #300 Peerless, #1776 Kalonyal, and #325 Pillows were made crimped as well as in the other two styles.



No. 1201 Pattern



3 1/2 in. Hdb. Jelly, three cornered.

#1201 Fandango, round and three-cornered handled jellies



#1220 Punt Band footed bowl

Jellies (except for a few individual ones) were usually 5" across, but some were only 4" and some were 6". For the footed jellies, it is sometimes difficult to distinguish between jellies and compotes. Typically, the footed jellies had bowls that weren't very deep. Compotes were usually larger (but not always), and the bowls tended to be relatively deep. One-handed jellies generally were 5" or 6" across



#352 Flat Panel footed jelly (cheese)



#393 Narrow Flute low-footed jelly (almond)



#150 Banded Flute sundae

In the 1910's, Heisey began making several two-handed jellies, sometimes in low-footed versions, sometimes in flat versions. #357 Prison Stripe and #400 Colonial Scalloped Top had low-footed two-handed ones. Flat two-handed jellies were sometimes just butter dishes with or without the lids, as in #393 Narrow Flute and #433 Greek



#351 Priscilla two-handed low-footed jelly



#393 Narrow Flute 2-handed jelly

Key. Greek Key had one of the most flamboyant two-handed jellies, with exorbitant handles that reached from top to bottom. (Greek Key had more jellies than any other



pattern—twelve different ones. Many of them doubled as other pieces.)



#433 Greek Key: 2-handled covered jelly or butter (left); 2-handled low-footed covered jelly

Later patterns that included two-handled jellies included #1401 Empress and #1469½ Ridgeleigh.



#1401 Empress 2-handled footed jelly (left); #1469½ Ridgeleigh 2-compartment, 2-handled jelly



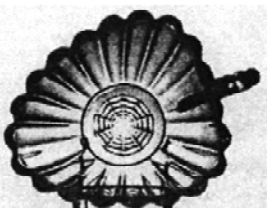
By the 1920's, one-handled jellies almost disappeared from production. In the early 1920's, one could find Yeoman jellies in two sizes, and for the colonial styles, one had #341 Puritan or #393 Narrow Flute to choose from. In the late 1930's, the shape was reintroduced in #1483 Stanhope, of all patterns. Such a forward-looking pattern reviving an old shape was unusual. Stanhope innovated, however, by making the 6" round shape in



#1483 Stanhope three-compartment handled jelly

both a single compartment and a three-compartment version. Two slightly later patterns including one-handled jellies were #1495 Fern and #1503 Crystolite. Crystolite even revived both the round and the three-cornered variants, and these featured an unusual "spiderweb" bottom. Crystolite also had a swan-handled jelly, which also served as a master nut or

a relish. Another pattern of this time had a one-handled jelly, although Heisey didn't call it that. In earlier days, some makers



#1503 Crystolite three-cornered handled jelly

referred to the one-handled jellies as handled nappies, but Heisey never did. Until Whirlpool, that is. They made a piece that for all the world is a one-handled jelly, but they called it a handled nappy.



#1951 Cabochon jelly

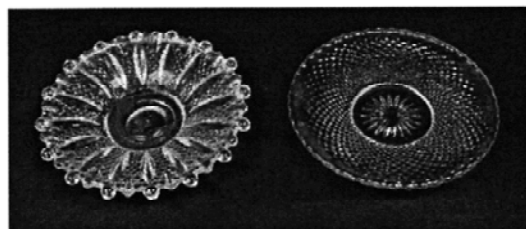
All these one-handled jellies disappeared by the 1940's. However, #1540 Lariat picked them up with a one-handled jelly, and Heisey's last major pattern, #1951 Cabochon, also had one. They also

tried one-handled jellies in a few limited patterns. The most familiar is probably the #1565 Leaf jelly, which barely qualifies as handled. More clearly handled was the #1534 Newcomer (also known as Melon). It is unusual in existing in both a pressed form and a blown form. The blown form was probably made by another company. Which came first is unknown.

In the 1930's, when Old Williamsburg was created by combining various pieces from older colonial patterns, we see the first mention of an individual jelly. Heisey said that it came out of #353 Medium Flat Panel, although no list has been found for the older pattern that shows an individual jelly. Several companies made look-alikes for this little colonial jelly. #1469 Ridgeleigh had an individual jelly, which is very similar in shape to the old Narrow Flute with Rim oval salted nut dish. Probably the most unusual thing to be called a jelly is also one of the most common, the #1454 Diamond Point individual jelly, which is just a 3¼" plate. Strangely, the similar #1535 Oval in Diamond Point also had a little plate like that, but that one was called a marmalade.



Individual Oval Jelly



#1535 Oval in Diamond Point marmalade (left); #1454 Diamond Point individual jelly

List of one-handed jellies, more or less complete. There are probably others that Heisey called jellies at one time or another.



5 1/2 in. Hdl. Jelly, three cornered.

#1201
Pandango, 5 1/2",
round or three-
cornered



5 1/2 in. Handled Jelly, Round.
Also made three-cornered.

#1205 Fancy
Loop, 5 1/2",
round or three-
cornered



5 1/2 in. Hdl. Jelly.

#1220 Punt
Band, 5 1/2",
round or three-
cornered.



5 1/2 inch Handled Jelly, 3 cornered.

#1225 Plain
Band, 5 1/2",
round or three-
cornered. Also
seen flat
rimmed, not

scalloped.



5 1/2 in. Hdl. Jelly, Rd.

#1235 Beaded
Panel and
Sunburst, 5 1/2",
round or three-
cornered



5 1/2 in. Handle Jelly, Round.
Also made in 3 cornered.

#1255
Pineapple and
Fan, 5 1/2", round
or three-
cornered

No. 300 Pattern.



6 in. Jelly Rd. also made in Crimped and 3 cor. or Triangle.

#300 Peerless,
6", round,
crimped, or
three-cornered



5 inch Handled Jelly, Rd. or Crimped. Also made in 6 inch.

#305 Punt
and Diamond
Point, 5" or 6",
round or
crimped



#315 Paneled
Cane, 5" round



6 in. Handled Jelly.

#325 Pillows, 5"
or 6", round or
crimped



5 IN. ROUND HANDLED JELLY

#335 Prince of
Wales, Plumes,
5", round or
three-cornered



5 IN. HANDLED JELLY

#337 Touraine,
5" round or 5 1/2"
three-cornered



5 IN. HANDLED JELLY



5 in. Handled Jelly

#339
Continental, 5",
round or three-
cornered



5 in. HANDLED JELLY THREE CORNERED

#341 Puritan, 5"
round or three-
cornered (also
offered in Old
Williamsburg)



5 in. HANDLED JELLY

#343
Sunburst, 5"
round or three-
cornered



5 IN. HANDLED JELLY THREE CORNERED

#1776
Kalonyal, 5",
round,
crimped, or
three-cornered



5 IN. HANDLED JELLY

#365 Queen
Anne, 5" round



5 IN. HANDLED JELLY



#393 Narrow Flute, 5", round or three-cornered



#433 Greek Key, 5" round



#451 Cross-Lined Flute, 5" round



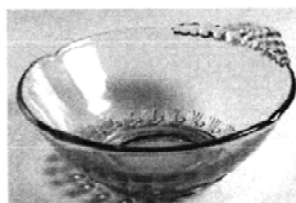
#1186 Yeoman, 5"



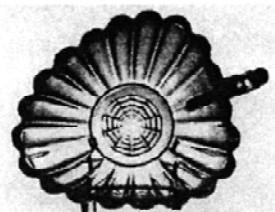
#1184 Yeoman, 6"



#1483 Stanhope, 6" round, 1 or 3 compartments, with or without knob



#1495 Fern, 6" round, crystal or Zircon



#1503 Crystolite, 5", round or three-cornered



#1503 Crystolite Swallow-handled jelly or relish, 6"



#1506 Whirlpool, 5½", round or three-cornered (called handled nappy)



#1523 Apple, 6".

#1524—unknown appearance



#1534 Newcomer (also known as Melon)



#1540 Lariat, 7"

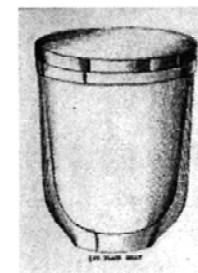


#1565 Leaf jelly, Dawn or crystal



#1951 Cabochon, 6" round

And, of course, jelly jars



Around 1900, Heisey made jelly jars that took simple metal tops. The lids slipped over the top edge and were sealed with paraffin.



The jars were either plain or fluted, and each one came in two sizes, one-third or one-half pint.

They also made 6-oz. and 10-oz. sizes of jelly jar with a screw-on glass top. A 1900 catalogue shows a plain lid, but a 1905 catalogue shows a patterned lid.



None of the jars had pattern numbers.