

Molasses and Syrup Jugs, Cans

Heisey's Glassware

Includes a myriad of
beautiful as well as
serviceable pieces



It is made to withstand
the brunt of daily use. Our
book will tell you many things
about table glass and its use.
Write for a copy

A. H. Heisey & Co.
Department 31 Newark, Ohio



352
CIGARETTE
HOLDER



351
JELLY



440
NAPPY



ON
EVERY
PIECE



353
MARMALADE



353 SUGAR
& CREAM



353
SANITARY SYRUP



ON
EVERY
PIECE

LOVINGLY LABORED OVER, CUT, TAPED, COPIED,
RESEARCHED, GUESSED, DISCUSSED, RE-
DISCUSSED AND THEN CUSSSED BY TRUDY MOCK

HEISEY SYRUPS AND MOLASSES

<u>Pattern #</u>	<u>Begin Date</u>	<u>End Date</u>	<u>Pattern Name</u>	<u>Item</u>
1200	1896	1899	Cut Block	Molasses
1201	1896	1905	Fandango	Molasses
1205	1896	1905	Fancy Loop	Molasses
1235	1896	1913	Beaded Panel & Sunburst	Molasses
1220	1897	1913	Punty Band	Molasses
1225	1897	1909	Sawtooth Band	Hotel Syrup
160	1998	1906	Locket on Chair	Molasses
1245	1898	1904	Ring Band	Molasses
1255	1898	1907	Pineapple & Fan	Molasses
300	1899	1944	Peerless	Molasses & Syrup
1280	1899	1901	Winged Scroll	Molasses
1295	1899	1903	Beaded Swag	Molasses
305	1900	1907	Punty & Diamond	Molasses & Syrup
315	1900	1908	Panelled Cane	Molasses
325	1901	1912	Pillows	Molasses & Syrup
331	1902	1929	Colonial Panel	Syrup
333	1902	1914	Waldorf Astoria	Syrup
335	1902	1912	Prince of Wales	Molasses & Syrup
337	1902	1938	Touraine	Molasses & Syrup
400	1902	1907	Colonial	Syrup
339	1903	1910	Continental	Molasses
343	1903	1920	Sunburst	Molasses
341	1904	1957	Puritan	Molasses
357	1904	1909	Prison Stripe	Molasses
353	1905	1929	Medium Flat Panel	Syrup
354	1905	1935	Wide Flat Panel	Syrup
355	1905	1935	Quator	Chocolate Pot
359	1905	1910		Syrup
1776	1906	1909	Kalonyal	Molasses
365	1906		Queen Ann	Syrup
150	1907	1932	Banded Flute	Syrup
379	1907	1911	Urn	Molasses
360	1915			Syrup
362	1915		Earnshaw	Syrup
363	1917		7016?	Syrup
371	1923		Scallop Top	Syrup
372	1929	1948	McGrady	Syrup
1567	1950	1956	Plantation	Syrup

TYPES OF METAL TOPS

G.I. base metal

N.T. nickel

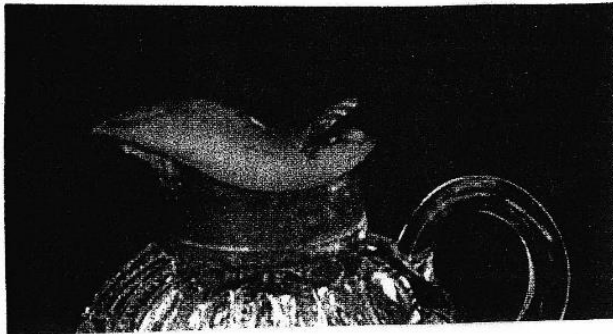
P.T. plated

S.T. sterling silver

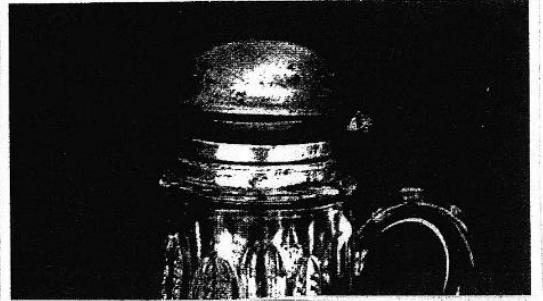
E.M. brass colored metal

O.K. base metal

E.P. extra plate



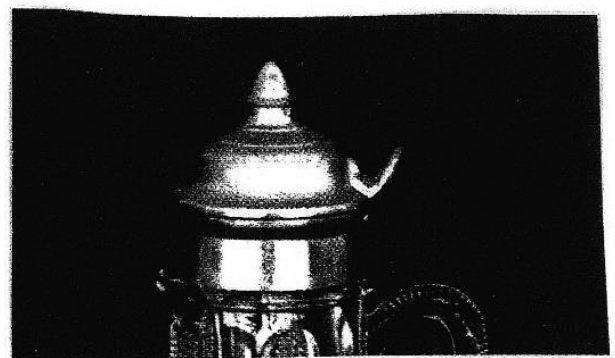
7-oz. hotel size with EM top,



8-7. No. 315 Panelled Cane 12-oz. molasses, NT top,
1900-1908



8-15. No. 1201 Fandango 10-oz. molasses,
OK top, glass lip, 1896-1905
Value: \$150-175



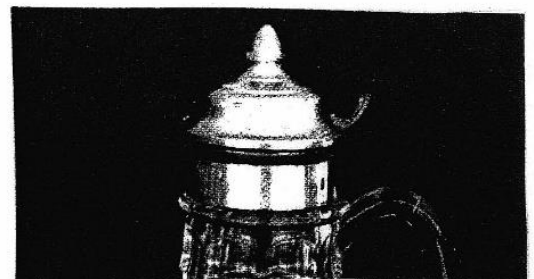
oz. molasses, OK top,



P.T. plated



Ivorina Verde, EP top, 1898-1904



S.T. sterling

No. 1201



No. 1 Mol. Can, Silver Top. 7 oz.



No. 2 Mol. Can, Silver Top and Handle. 7 oz.



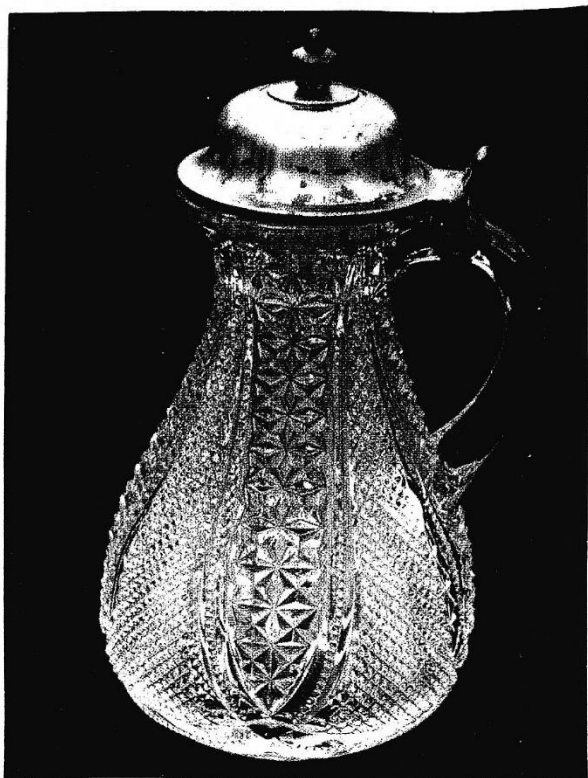
13 oz. Mol. Can, Glass Lip.



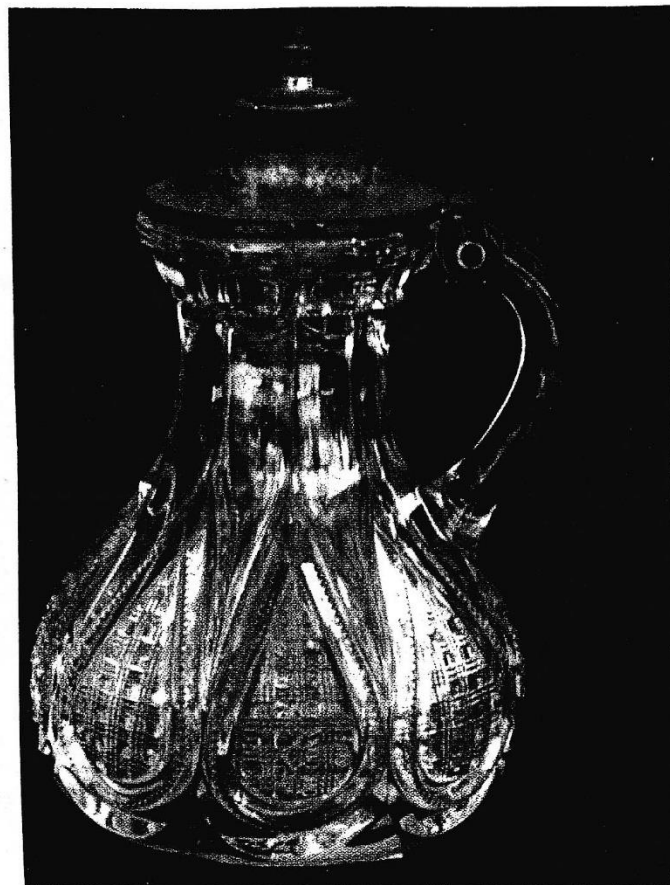
No. 4 Mol. Can, E. M. 7 oz.



No. 5 Mol. Can, Silver Top. 7 oz.



8-15. No. 1201 Fandango 10-oz. molasses, OK top, glass lip, 1896-1905
Value: \$150-175



11-oz. with OK top, Value: \$175-185), No. 1205 glass lip



8-1. No. 1205 Fancy Loop 11-oz. molasses can

7-oz. hotel size with EM top,



7 oz. Molasses Can, Plated Top.



Left, No. 1235
Beaded Panel
and Sunburst
7-oz. hotel
molasses,
EM top,
1896-1913,
Value:
\$165-175;



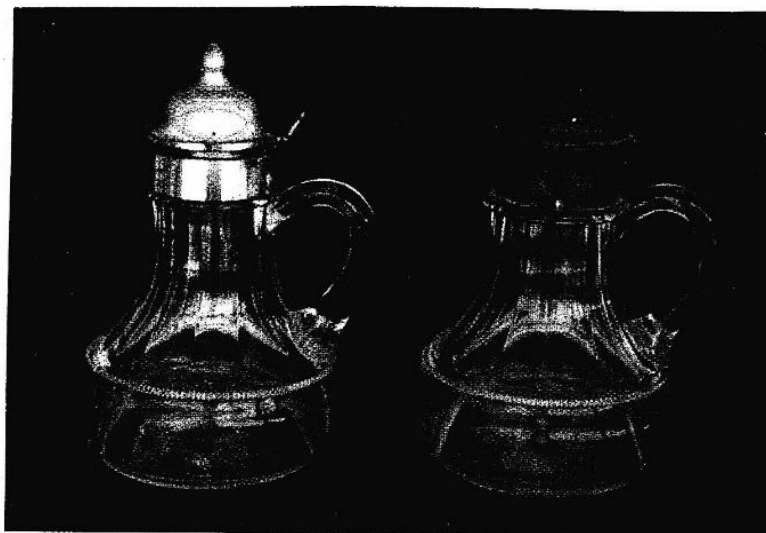
13 oz. Molasses Can; O. K. Top.

No. 1220



Hotel Mol. Can, E. M. Top.

No. 1225 Plain Band

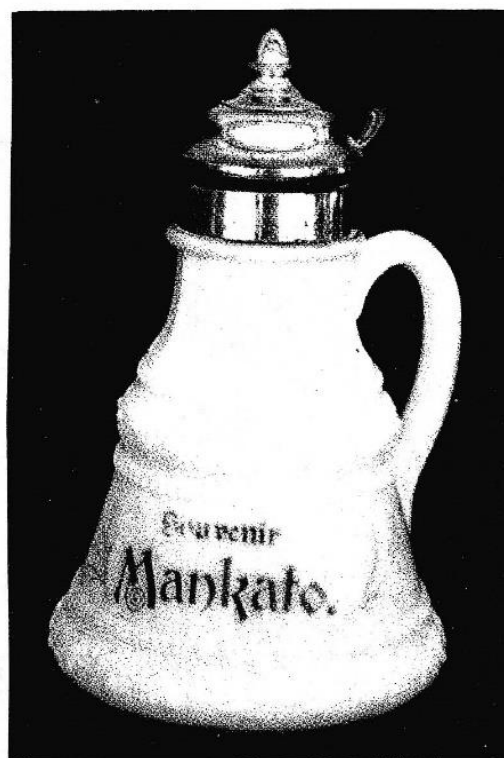


8-2. No. 1225 Sawtooth Bands molasses cans
(left, 11-oz. with OK top, 1896-1905, Value: \$125-135;
right, 11-oz. with NT top, Value: \$95-110)

No. 160 Ware.

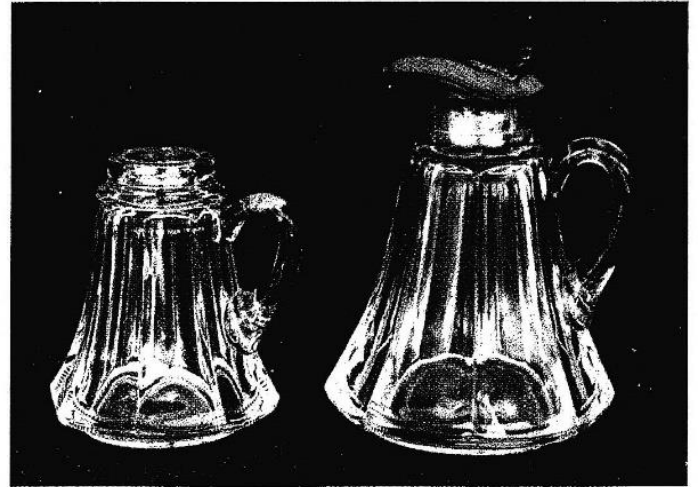


Mol. Can, N. T.



No. 1245 Ring Band souvenir 13-oz. molasses,
Ivorina Verde, EP top, 1898-1904
Value: \$275-295

8-19.
No. 1255
Pineapple
and Fan 10-
oz. molasses,
Emerald,
gold trim,
OK top,
1898-1907
Value:
\$325-350



8-17. No. 300 Left: Colonial 5-oz. molasses, no top,
Value: \$25-30; 8-oz. molasses, EM top, 1897-1957,
Value: \$75-85

No. 300 Peerless
assortment, 1899 ad.
Top: molasses can,
covered butter, oil &
stopper. Middle:
flared nappy. Bot-
tom: sugar, cream,
spoon, honey dish &
cover (honey dish &
butter misla-
beled in ad).

A. H. HEISEY & CO.,
Incorporated.

NEWARK, OHIO.

11-4 MOLASSES CAN

10-6 HONEY DISH AND COVER

10-8 OIL BOTTLE AND STOPPER

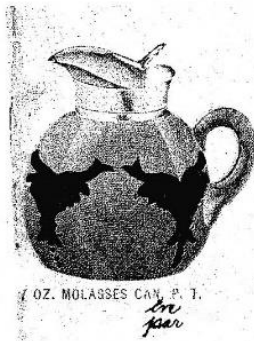
11-2 SUGAR AND COVER

11-3 CREAM

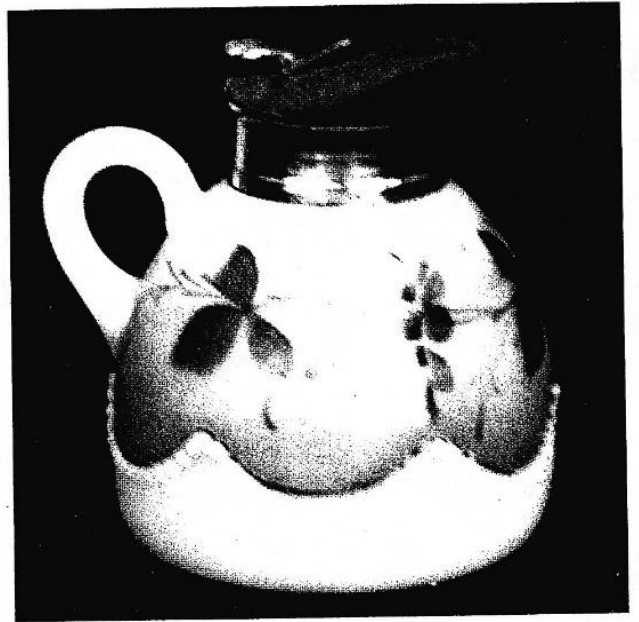
11-5 SPOON

11-1 BUTTER AND COVER

No. 300
PATTERN.



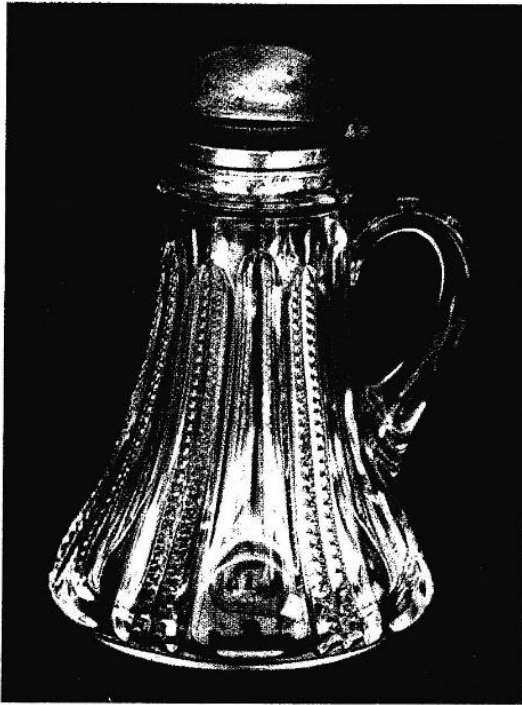
No. 1280



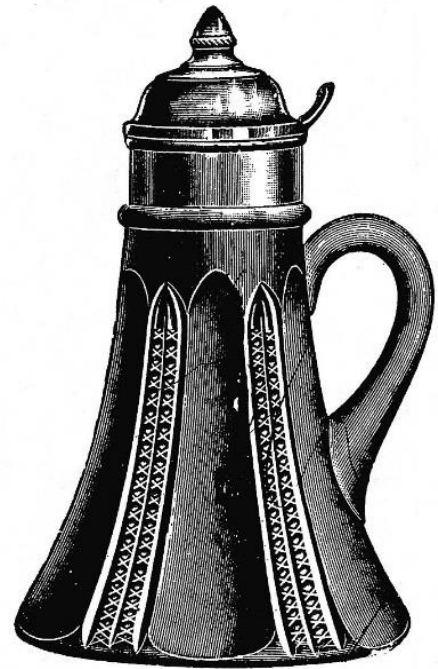
86. No. 1295 Beaded Swag 9-oz. hotel molasses,
Opal with floral, EM top, 1899-1905
Value: \$350-375



89. No. 305 Puntty and Diamond Point, 1899-1912 (Left, 7-oz. hotel syrup, embossed silver banding, Value:
\$145-165; Right, 13-oz. molasses, OK top, Value: \$225-250)



8-7. No. 315 Panelled Cane 12-oz. molasses, NT top,
1900-1908
Value: \$175-195



13 oz. No. 315 Molasses Can O. K.



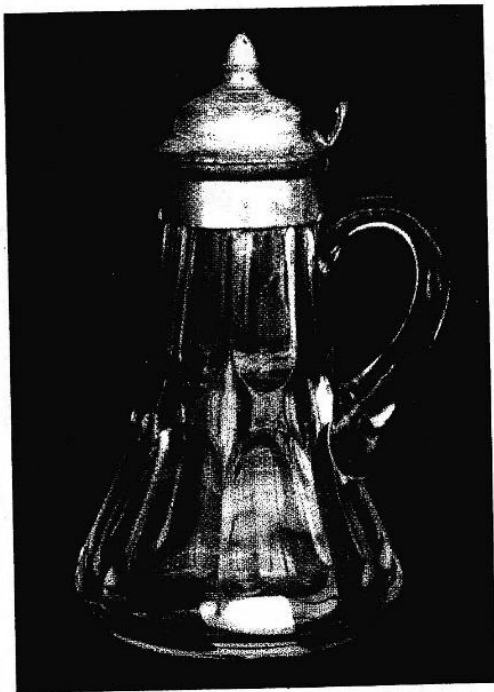
8-20. No. 325 Pillows
molasses cans:
left, 13-oz., right, 7-oz.,
1901-1912
Values: \$225-245 and
\$250-275



18 Oz. Syrup O. K. Top

No. 331 COLONIAL
PATTERN
PANEL

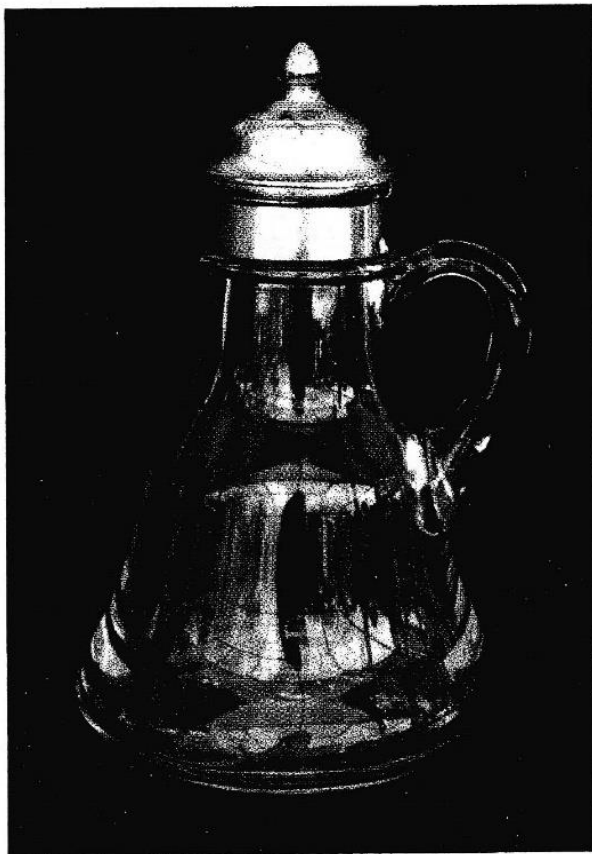




8-10.
No. 335 Prince of Wales
Plumes
15-oz. molasses, OK top,
1902-1912
Value: \$225-230



No. 333 Waldorf-Astoria 10-oz. molasses, OK
top, 1902-1914
Value: \$125-135



8-12. No. 337 Touraine 15-oz. molasses, OK top,
1902-1938
Value: \$85-100

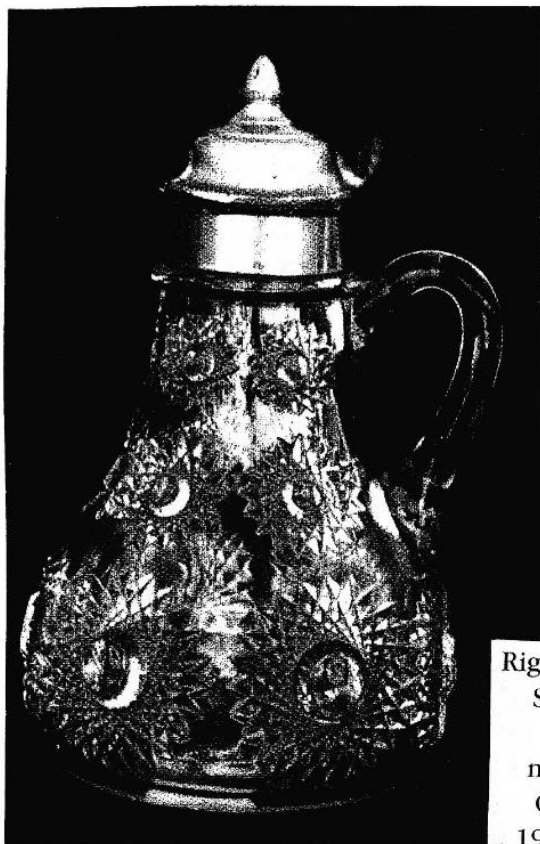


No. 337 Touraine

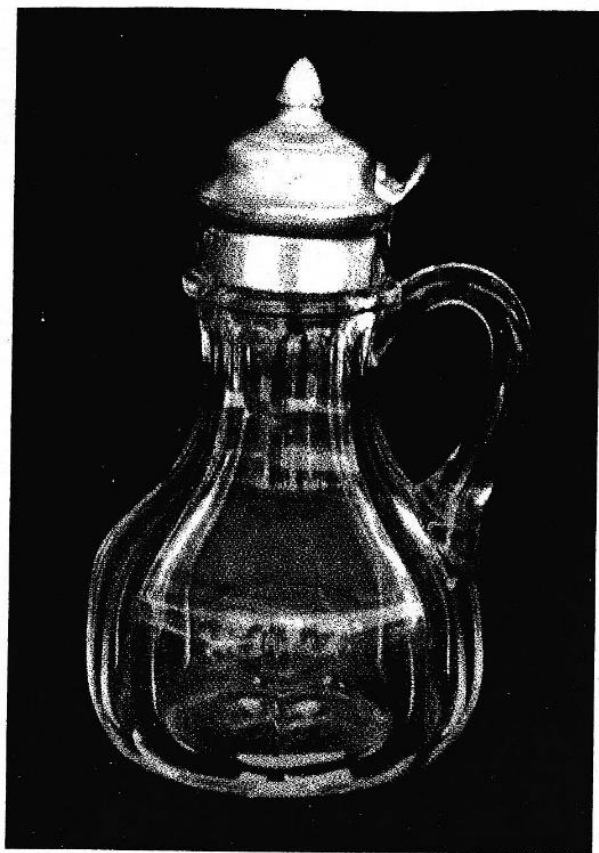


No. 400 COLONIAL
PATTERN

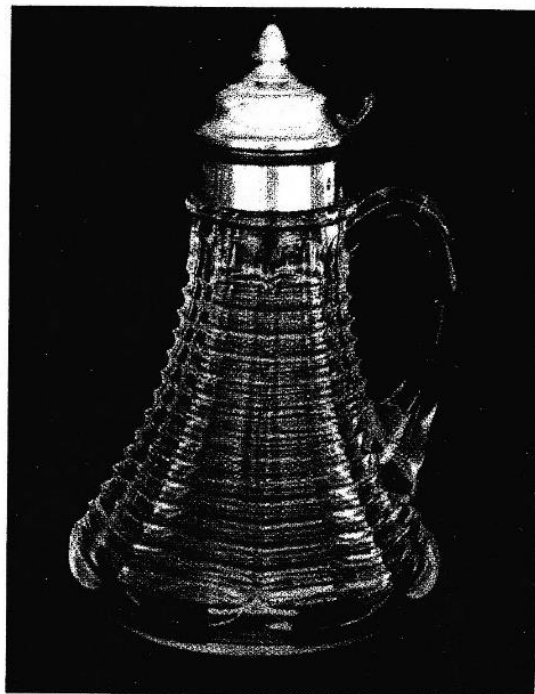
No. 339 Continental, molasses
can,



Right, No. 343
Sunburst
16-oz.
molasses,
OK top,
1903-1920,
Value:
\$250-275



8-11. No. 341 Puritan 11-oz. molasses, OK top,
1904-1957
Value: \$85-100



8-8. No. 357 Prison Stripe 14-oz. molasses, ST top,
1904-1909
Value: \$295-310

DOMINO SUGAR SERVER

HEISEY'S GLASSWARE

The Heisey patented sanitary Syrup Jug is Easy to fill—Easy to clean—always inviting and refreshingly appetizing in appearance. The patented cover snaps off or on instantly.

Heisey's H Glassware

allows you the choice of many ornamental as well as useful pieces. It is for sale by the best crockery and department stores.

An interesting book of designs will be sent on request.

A. H. Heisey & Co.
393 SANITARY Dept. 51 Newark, O.
SYRUP JUG

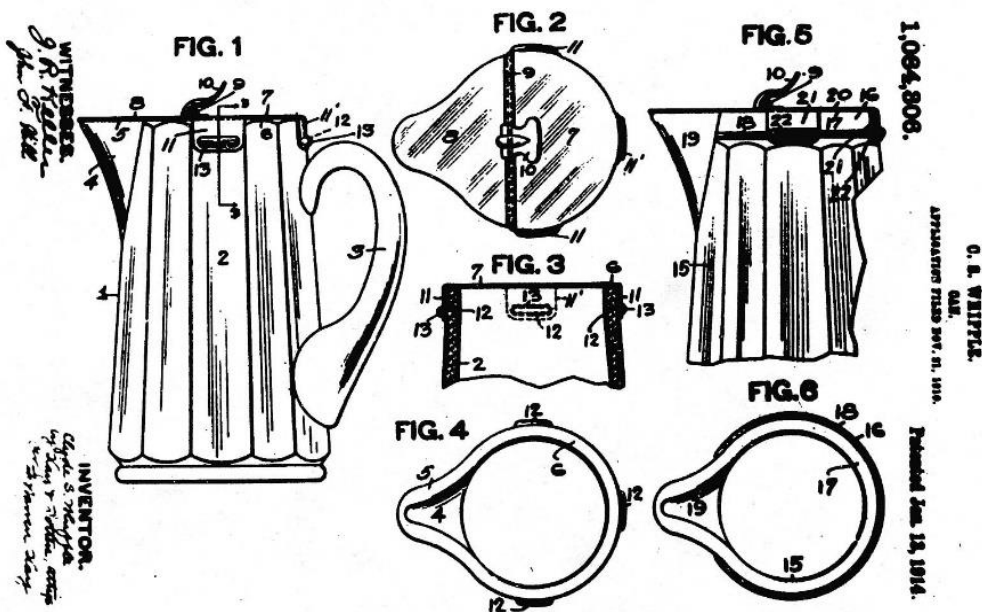
359 SANITARY SYRUP JUG

IP 15A A detailed drawing of the colonial. The design could be modified for use with a metallic cover held in place by lugs on the pitcher.

AD 14-13 Sanitary syrup **353 Medium Flat Panel*** made in 7 and 12 ounces, raised bottom. Refer to DP 37 for assorted sizes in different pattern lines. Sanitary syrup **359** made in 9-ounce size. Refer to DP 38 for other size. Metallic lids on syrups had not yet been granted a patent, but the application had been on file with the patent office for two years. **355 Quator*** domino sugar server, also made double. All items were protected by design patents.

Country Life in America, February 1913, p. 117
House Beautiful, April 1913, p. xxi

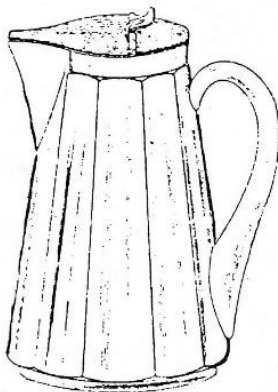
AD 14-13



IP 15A

DP 37 Patented April 5, 1910. This sanitary syrup came in three patterns, depending on size. **353 Medium Flat Panel*** had raised collar, rim bottom in 1- and 12-ounce sizes; flat bottom in 5-, 7-, and 12-ounce sizes. See AD 2-12, page 120, for raised bottom. **354 Flat Panel*** had raised collar, rim bottom in squat 12- and 16-ounce sizes; flat bottom in 12- and 16-ounce sizes. **355 Quator*** had raised collar, rim bottom in 24- and 34-ounce sizes; 32-ounce had chocolate pot with rubber shoe; flat bottom in 24- and 32-ounce sizes. Sanitary syrup was signed on spout, sometimes once on each side. Made in crystal. Infrequently made in Flamingo, Moon Gleam, and Sahara, but not in all sizes.

40,600. MOLASSES-PITCHER. ANDREW J. SANFORD, Newark, Ohio, assignor to A. H. Helsey & Co., Inc., Newark, Ohio, a Corporation of West Virginia. Filed Feb. 2, 1910. Serial No. 541,648. Term of patent 14 years.



The ornamental design for a molasses pitcher, as shown and described.

DP 37

No. 355 PATTERN



**24-OZ. SANITARY SYRUP
ALSO MAKE 32-OZ.**



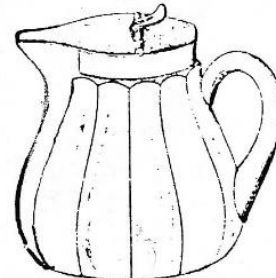
32 OZ. CHOCOLATE POT
SHOWING REMOVABLE RUBBER SHOE
DESIGN PATENT NO. 40600

AD 2-13 *House Beautiful*, February 1913, p. xxi
Ladies' Home Journal, February 1913, p. 68
Woman's Home Companion, February 1913, p. 55
Country Life in America, February 1913, p. 117

DP 38 Patented April 5, 1910. **357** sanitary syrup made in 7 ounce; **359** sanitary syrup made in 9 ounce. In this particular case, different stock numbers are given to the two different sizes. The syrup is pear shaped, optic; signed on spout. Some syrups will have PAT'D 4/5/10 around the large Diamond H.

DP 74 Patented March 24, 1914. Patent design for a metallic lid used on numerous molasses and syrup pitchers. In the invention patent records and within the factory, these syrups were called cans. This application was on file three years prior to the patent being granted. The lids were made in nickel plate or chromium. This lid will be on most syrups shown in this book.

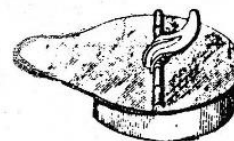
40,601. MOLASSES-PITCHER. ANDREW J. SANFORD, Newark, Ohio, assignor to A. H. Helsey & Co., Inc., Newark, Ohio, a Corporation of West Virginia. Filed Feb. 2, 1910. Serial No. 541,649. Term of patent 14 years.



The ornamental design for a molasses pitcher, as shown and described.

DP 38

45,488. PITCHER-TOP. ANDREW J. SANFORD, Newark, Ohio. Filed Jan. 16, 1911. Serial No. 603,021. Term of patent 14 years.

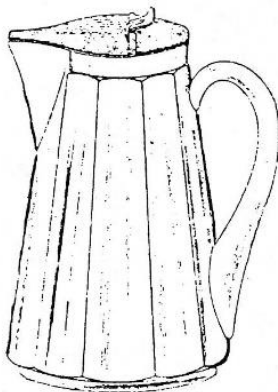


The ornamental design for a pitcher top, as shown.

DP 74

DP 37 Patented April 5, 1910. This sanitary syrup came in three patterns, depending on size. **353 Medium Flat Panel*** had raised collar, rim bottom in 1- and 12-ounce sizes; flat bottom in 5-, 7-, and 12-ounce sizes. See AD 2-12, page 120, for raised bottom. **354 Flat Panel*** had raised collar, rim bottom in squat 12- and 16-ounce sizes; flat bottom in 12- and 16-ounce sizes. **355 Quator*** had raised collar, rim bottom in 24- and 34-ounce sizes; 32-ounce had chocolate pot with rubber shoe; flat bottom in 24- and 32-ounce sizes. Sanitary syrup was signed on spout, sometimes once on each side. Made in crystal. Infrequently made in Flamingo, Moon Gleam, and Sahara, but not in all sizes.

40,600. MOLASSES-PITCHER. ANDREW J. SANFORD, Newark, Ohio, assignor to A. H. Helsey & Co., Inc., Newark, Ohio, a Corporation of West Virginia. Filed Feb. 2, 1910. Serial No. 541,648. Term of patent 14 years.



The ornamental design for a molasses pitcher, as shown and described.

DP 37

NO. 355 PATTERN



**24-OZ. SANITARY SYRUP
ALSO MAKE 32-OZ.**



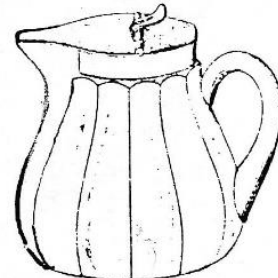
32 OZ. CHOCOLATE POT
SHOWING REMOVABLE RUBBER SHOE
DESIGN PATENT NO. 40600

AD 2-13 *House Beautiful*, February 1913, p. xxi
Ladies' Home Journal, February 1913, p. 68
Woman's Home Companion, February 1913, p. 55
Country Life in America, February 1913, p. 117

DP 38 Patented April 5, 1910. **357** sanitary syrup made in 7 ounce; **359** sanitary syrup made in 9 ounce. In this particular case, different stock numbers are given to the two different sizes. The syrup is pear shaped, optic; signed on spout. Some syrups will have PAT'D 4/5/10 around the large Diamond H.

DP 74 Patented March 24, 1914. Patent design for a metallic lid used on numerous molasses and syrup pitchers. In the invention patent records and within the factory, these syrups were called cans. This application was on file three years prior to the patent being granted. The lids were made in nickel plate or chromium. This lid will be on most syrups shown in this book.

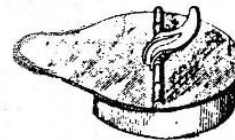
40,601. MOLASSES-PITCHER. ANDREW J. SANFORD, Newark, Ohio, assignor to A. H. Helsey & Co., Inc., Newark, Ohio, a Corporation of West Virginia. Filed Feb. 2, 1910. Serial No. 541,649. Term of patent 14 years.



The ornamental design for a molasses pitcher, as shown and described.

DP 38

45,488. PITCHER-TOP. ANDREW J. SANFORD, Newark, Ohio. Filed Jan. 16, 1911. Serial No. 603,021. Term of patent 14 years.



The ornamental design for a pitcher top, as shown.

DP 74

QUEEN ANN

No. 365 PATTERN

DESIGN PATENT NO. 38200



19 Oz. Molasses Can, O. K. Top

No. 1776 Kalonyal

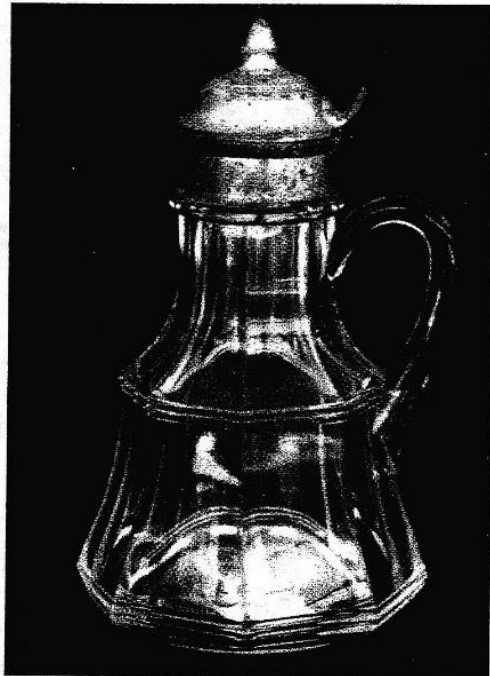


19 Oz. Molasses Can O. K. Top



molasses can.

No. 150 Banded Flute



8-14. No. 379 Urn 14-oz. molasses, OK top,

1907-1911

Value: \$225-245



12 Oz. Molasses Can
O. K. Top

URN

No. 379 PATTERN

No. 360 Sanitary Syrup

Date: 1915

Color: Crystal

Comments: Has a ground and polished bottom.



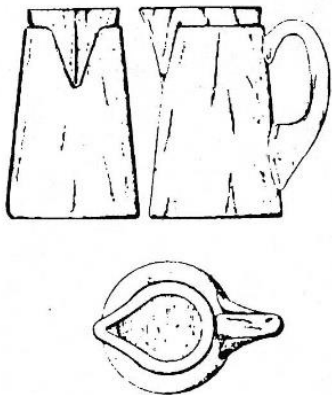
No. 360 sanitary syrup.

Sanitary syrup\$75.00



No. 362 Earnshaw syrup with No. 679 Windsor cutting.

52,347. PITCHER. ANDREW J. SANFORD, Newark, Ohio, assignor to A. H. Helsey & Co., Newark, Ohio. Filed May 26, 1916. Serial No. 100,159. Term of patent 14 years.



The design for a pitcher, as shown.

DP 115

DP 115 Patented August 27, 1918. 362 sanitary syrup, 7 ounce, stuck handle. Crystal. Signed on side of spout. Was carried in a line of syrups, not in a pattern line. Sold to decorating companies for heavy and light cuttings, engravings, and encrustation ornamentation in burnished gold or sterling silver. The Irving Cut Glass Co., Inc., included this syrup on its Iris pattern page of light cuttings. The patent drawing does not show the patented metallic lid; however, the syrup shown in the Irving cut-glass line does show the lid.

No. 362 Earnshaw

Date: 1915

Color: Crystal

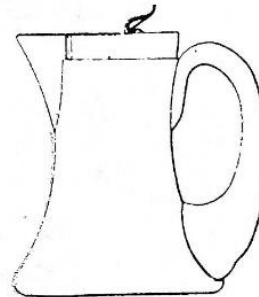
Patent: No. 52347 was granted to A. J. Sanford on 8-27-1918 although it had been applied for in 1916.

Comments: Usually marked with the Diamond H on the side of the spout. Made primarily for decorating.

Sanitary syrup, 7 oz.\$75.00
Sanitary syrup, 12 oz.85.00

DP 119 Patented November 12, 1918. 363 sanitary syrup made in 5, 7, and 12 ounce. Stuck handle. Signed on side of spout. Crystal. Plain, etched, and light cuttings by Heisey. Also sold to decorating companies for heavy and light cuttings, engraving, sterling silver openwork, and possibly encrustation or hand painting. The patent drawing shows the patented metallic lid on the syrup.

52,675. PITCHER. ANDREW J. SANFORD, Newark, Ohio, assignor to A. H. Helsey & Co., Newark, Ohio. Filed May 22, 1917. Serial No. 170,294. Term of patent 14 years.



The ornamental design for a pitcher as shown.

DP 119

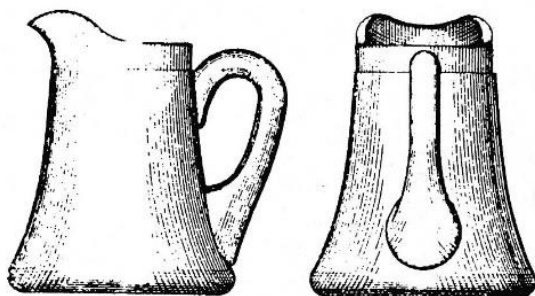


1. #1510 Floral Bowl 11 1/2" square. 2. #7012 Hair Receiver 4 1/2" wide. 3. #7013 Hair Receiver 4" wide. 5. #7011 Bowl 9 3/4" wide. x 3 3/4". 6. #7014 Compote 7. #7016 Cream or Molasses 7017 Door Knob 1 7/8" high. door knob are signed. The s top quality.

DP 131 Patented February 7, 1922. 371 sanitary syrup made in 7-ounce size. Stuck handle. Crystal. Signed on spout. Heisey catalog illustrations show a different handle molded with a slight protrusion for a thumb grasp. The design patent number is under the illustration. This syrup was popular with decorating companies for light cuttings, engravings, and other surface ornamentations. It may also be found with Heisey light cuttings.

DP 134 Patented July 17, 1923. 371 sanitary syrup made in 7-ounce size; stuck handle. This syrup is identical to DP 131, except this design patent includes the patented metallic lid or cover.

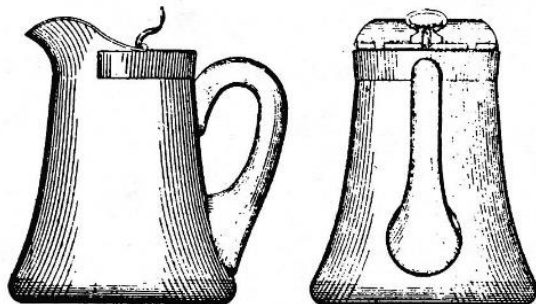
60,378. PITCHER. ANDREW J. SANFORD, Newark, Ohio, assignor to A. H. Heisey & Co., Newark, Ohio. Filed June 17, 1921. Serial No. 478,450. Term of patent 14 years.



The ornamental design for a pitcher, as shown.

DP 131

62,075. PITCHER. ANDREW J. SANFORD, Newark, Ohio, assignor to A. H. Heisey & Co., Newark, Ohio. Filed June 17, 1921. Serial No. 478,452. Term of patent 14 years.



The ornamental design for a pitcher, as shown.

DP 134



McGrady, No. 372

Date: 1929 to 1948

Colors: Crystal, Moongleam, Flamingo, Sahara

Comments: Pressed syrups marked with the Diamond H on the side of the spout. For Moongleam, Flamingo, or Sahara add 200%.

Syrup, 5 oz.....	\$50.00
Syrup, 7 oz.....	60.00
Syrup, 12 oz.....	75.00

Plantation
1567

*red
green
yellow*



#372 Heisey Syrup Pitcher

by JOSEPH D. LOKAY

In a previous article, I discussed the Heisey #353, #354 and #355 colonial style syrup pitchers (Heisey News, April 1977). The #372 syrup pitcher came after these pitchers, and is similar in colonial design to the straight-sided #353, #354 and #355 pitchers except for the shape of the handle. The two features which help identify the #372 syrup pitcher are (1) the straight sides that slightly taper inward to form a smaller diameter at the top, and (2) the flat top handle located near the top of the pitcher. Sketch one compares the #353, #354 and #355 style of handle to that of the #372 handle.

The #372 pitcher is shown in V. McLean's reproduction of Heisey catalog #212 (1937), p. 17 and in Heisey pressed ware catalog #109 (circa 1928-29), p. 26. It is not shown in Heisey's 1913 catalog. The two catalogs make reference to three sizes for the #372 pitcher: 5, 7 and 12 oz. The catalog also shows the same patented metal lid on the #372 pitcher as was on the #353, #354 and #355 syrup pitchers



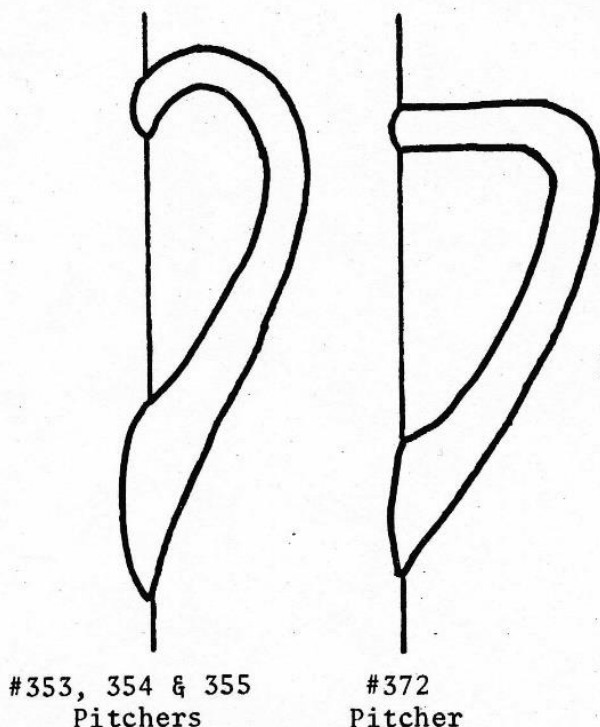
#372 - 7 oz.
also make 5 & 12 oz.

except that the lever arm for opening the top is straight. The metal lids were available either chromium plated or nickel plated. Since #109 appears to be the first Heisey catalog to show the #372 pitcher, production of that pitcher most likely started around 1928.

The #372 pitcher can be found signed or unsigned, I believe the unsigned ones exist because the diamond H had essentially worn away in the mold. Study of the signed #372 pitchers showed the following interesting points. The pitchers are

only marked once with a diamond H that is on one side of the spout as compared to the #353, #354 and #355 syrup pitchers which are marked twice, one on each side of the spout. The diamond H on the #372 pitcher is small and is located close-in to where the spout meets the wall of the pitcher. Sketch 2 shows the location of the marks. The orientation for sketch 2 is looking down at the top from above the pitcher. For the 11 oz. pitcher, the single mark is on the right hand face of the spout. While, for the 5 oz. pitcher, the single mark is on the left hand face of the spout. I believe the mark on the 7 oz. pitcher will be in the same place as on the 5 oz. pitcher.

I have seen the small and large #372 pitcher in crystal, flamingo, moongleam and sahara. It is possible that the pitcher was also made in marigold and hawthorne, however, I have not seen or heard of any. Based on the pattern lines generally found in marigold and hawthorne and on the concept that the accessory piece design should reasonably harmonize with the pattern line, I would be more of the opinion that the pitcher was **not** made in marigold or hawthorne. Does anyone have a #372 syrup pitcher in either of these two colors?

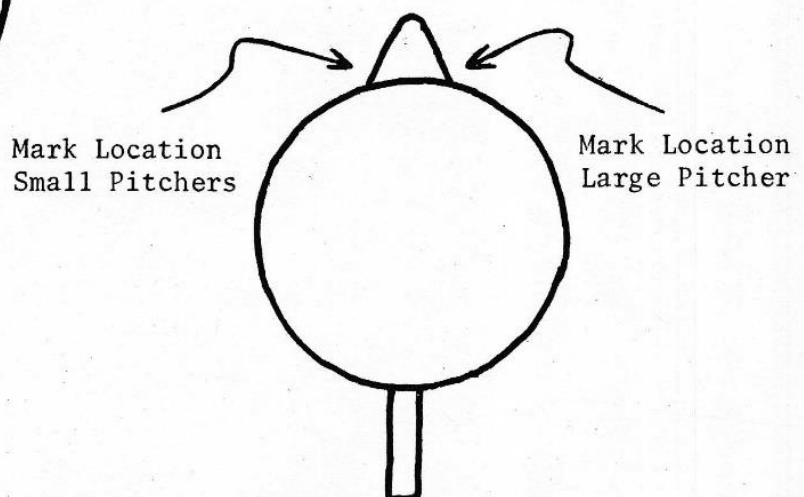


#353, 354 & 355
Pitchers

#372
Pitcher

COMPARISON OF HANDLES

SKETCH ONE



Mark Location
Small Pitchers

Mark Location
Large Pitcher

#372 SYRUP PITCHER

SKETCH TWO

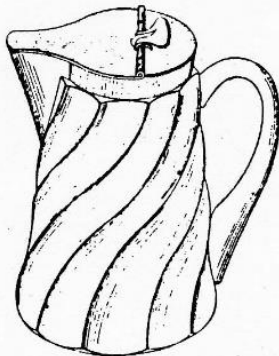
??

The following seven molasses-syrup pitchers do not have line numbers. If they were manufactured, they should be between the stock numbers noted in the syrup line. The numbers are in order as determined by patent application date, not by date of patent. These syrups may have appeared in catalogs not available for research, may not have been manufactured long enough to be listed in a catalog (catalogs were not printed annually), or may not have been issued at all.

DP 51 Patented June 12, 1912. Design for a molasses-syrup container. A patent application for a hinged sanitary cover had already been filed. Should have a syrup line number between **359** and **362**, based on patent application dates.

DP 68 Patented May 13, 1913. Design for a molasses-syrup container. A patent application for a hinged sanitary cover had already been filed. Should have a line number between **359** and **362**.

42,612. MOLASSES-PITCHER. ANDREW J. SANFORD, Newark, Ohio, assignor to A. H. Heisey & Co., Newark, Ohio, a Corporation of West Virginia. Filed Feb. 12, 1912. Serial No. 677,254. Term of patent 14 years.



The ornamental design for a molasses pitcher, as shown.

DP 51

44,026. MOLASSES-JUG. ANDREW J. SANFORD, Newark, Ohio, assignor to A. H. Heisey & Co., Newark, Ohio, a Copartnership. Filed Jan. 2, 1913. Serial No. 739,890. Term of patent 14 years.



The ornamental design for a molasses jug, as shown.

DP 68

DP 76 Patented March 31, 1914. Design for a molasses-syrup container with the now-patented hinged sanitary cover. Should have a line number between **359** and **362** in the syrup series of stock control numbers.

DP 120 Patented March 8, 1921. Design for a syrup container with patented hinged sanitary cover. Should have a line number between **363** and **371** in the syrup series.

DP 121 Patented March 8, 1921. Design for a syrup container with patented hinged sanitary cover. Should have a line number between **363** and **371** in the syrup series.

45,541. MOLASSES-JUG. ANDREW J. SANFORD, Newark, Ohio, assignor to A. H. Heisey & Co., Newark, Ohio, a Copartnership. Filed Jan. 2, 1913. Serial No. 739,889. Term of patent 14 years.



The ornamental design for a molasses jug, as shown.

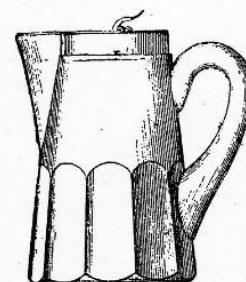
DP 76

57,272. GLASS ARTICLE. Andrew J. Sanford, Newark, Ohio, assignor to A. H. Heisey & Co., Newark, Ohio. Filed July 7, 1919. Serial 309,238. Term of patent 14 years.



The ornamental design for a glass article substantially as shown.

DP 120



DP 121

!!!!!!!!!!!!!!????????????!!!!!!!!!!!!!!

DP 122 Patented March 8, 1921. Design for a footed syrup container with patented hinged sanitary cover. Should have a line number between **363** and **371** in the syrup series.

DP 132 Patented March 21, 1922. Design for a syrup container with patented hinged sanitary cover. Should have a line number between **363** and **371** in the syrup series.

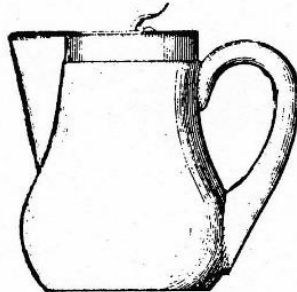
57,274. GLASS ARTICLE. Andrew J. Sanford, Newark, Ohio, assignor to A. H. Heisey & Co., Newark, Ohio. Filed July 8, 1919. Serial 309,516. Term of patent 14 years.



The ornamental design for a glass article substantially as shown.

DP 122

60,706. GLASS ARTICLE. ANDREW J. SANFORD, Newark, Ohio, assignor to A. H. Heisey & Co., Newark, Ohio. Filed July 7, 1919. Serial No. 309,240. Term of patent 3½ years.




The ornamental design for a glass article, substantially as shown.

DP 132

DOMINO SUGAR SERVER

HEISEY'S
TRADE MARK
GLASSWARE

The Heisey patented sanitary Syrup Jug is Easy to fill—Easy to clean—always inviting and refreshingly appetizing in appearance. The patented cover snaps off or on instantly.

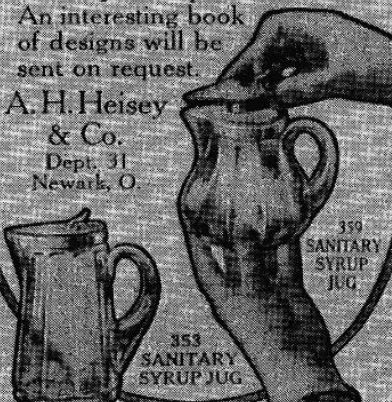
Heisey's  Glassware

allows you the choice of many ornamental as well as useful pieces. It is for sale by the best crockery and department stores. An interesting book of designs will be sent on request.

A. H. Heisey & Co.
Dept. 31
Newark, O.

353 SANITARY SYRUP JUG

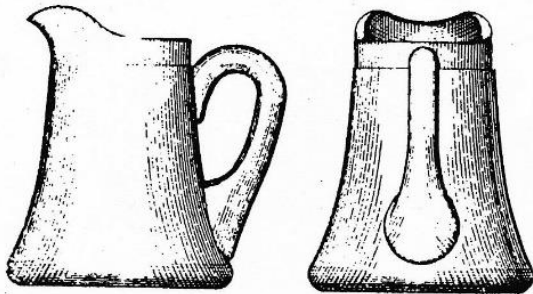
359 SANITARY SYRUP JUG



DP 131 Patented February 7, 1922. 371 sanitary syrup made in 7-ounce size. Stuck handle. Crystal. Signed on spout. Heisey catalog illustrations show a different handle molded with a slight protrusion for a thumb grasp. The design patent number is under the illustration. This syrup was popular with decorating companies for light cuttings, engravings, and other surface ornamentations. It may also be found with Heisey light cuttings.

DP 134 Patented July 17, 1923. 371 sanitary syrup made in 7-ounce size; stuck handle. This syrup is identical to DP 131, except this design patent includes the patented metallic lid or cover.

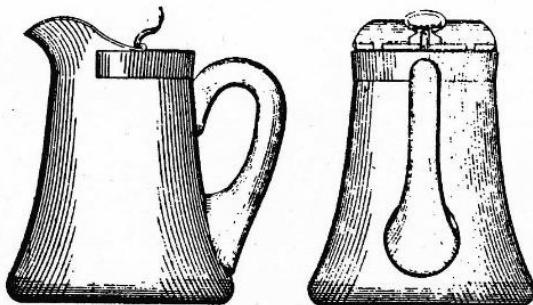
60,378. PITCHER. ANDREW J. SANFORD, Newark, Ohio, assignor to A. H. Heisey & Co., Newark, Ohio. Filed June 17, 1921. Serial No. 478,450. Term of patent 14 years.



The ornamental design for a pitcher, as shown.

DP 131

62,075. PITCHER. ANDREW J. SANFORD, Newark, Ohio, assignor to A. H. Heisey & Co., Newark, Ohio. Filed June 17, 1921. Serial No. 478,452. Term of patent 14 years.



The ornamental design for a pitcher, as shown.

DP 134



McGrady, No. 372

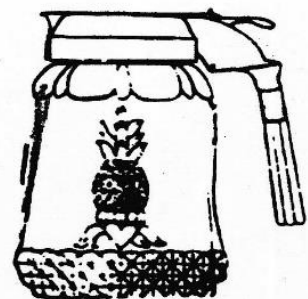
Date: 1929 to 1948

Colors: Crystal, Moongleam, Flamingo, Sahara

Comments: Pressed syrups marked with the Diamond H on the side of the spout. For Moongleam, Flamingo, or Sahara add 200%.

Syrup, 5 oz.....	\$50.00
Syrup, 7 oz.....	60.00
Syrup, 12 oz.....	75.00

Plantation
1567



38