

Heisey Cruets

Prepared for
Great Plains Heisey Club
April 2006

By
Marcia Philbrick



Heisey Cruets

Prepared for
Great Plains Heisey Club
April 2006



Cruet

- A small vessel used for containing the wine and water required for the Holy Sacrifice of the Mass. Two are always employed. The Roman Missal (Rubric Gen., XX) directs that they should be made of glass. This is the most suitable material because easily cleaned, and its transparency obviates danger of confounding the water and wine. Other materials, however, are used, such as gold, silver, and other precious metals. In this case it is advisable to have a V (*Vinum*) on the wine and an A (*aqua*) on the water cruet, so that one may be easily distinguished from the other. In shape nothing is prescribed, but the vessels should have a good firm base on which to stand securely and a fairly wide neck so as to admit of being easily cleansed. They should have a cover to keep away flies and insects. Formerly the wine for the Holy Sacrifice was brought by the faithful in a jar-shaped vessel. It was then received by the deacon and poured into the chalice, a vestige of which custom is still observable at the consecration of a bishop.

<http://www.newadvent.org/cathen/04543a.htm>



Cruet Bottle

- CRUET or CRUET BOTTLE is derived from the Dutch "Kruicke." It was sometimes spelled "crewet." A cruet is a small jug-shaped receptacle, usually with a lip or spout, a handle, and a stopper or lid, used for serving liquid condiments (oil, vinegar, also lemon juice, garlic juice, etc.) at the table or to hold wine or water at altar service. When made to be set by itself on the table, the cruet was a flat-bottomed small jug with a narrow neck, similar in shape to the carafe, but differing in that the cruet had a stopper and usually an applied handle. Cruets were free-blown, blown-in—the mold, and often decorated with etching, cutting or enameling; many later examples were of pattern glass. CASTER BOTTLES were cruets made to be set in stands or frames, did not have handles, and were much narrower overall.

<http://www.cutglass.org/articles/art1445.htm>



Stoppers



No. 1 STOPPER



No. 2 STOPPER



No. 3 STOPPER



No. 4 STOPPER

No. 1

No. 2

No. 3

No. 4



Stoppers



No. 5 STOPPER



No. 6 STOPPER



No. 7 STOPPER



No. 8 STOPPER

No. 5

No. 6

No. 7

No. 8



Stoppers



No. 9 STOPPER



No. 10 STOPPER



No. 11 STOPPER

No. 9

No. 10

No. 11



1 Paulson

- 1936-1937
- 1 ½ oz Crystal
- 5 ½" tall (including stopper)
- Unmarked
- #98 Stopper



Paulson p. 7



2 Barnes

- 1936-1937
- Crystal
- 3 oz est.
- 6 ¼" high
- Unmarked
- #97 stopper



Paulson p. 7



4 Square Oil

- 1898-1902
- Crystal
- 4 oz
- 2 rows of 21 diamonds, each at corners
- Unmarked
- #4 or 62 stopper

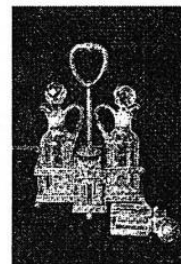


Paulson p. 7



4 Square Oil Set

- 1898 to 1902
- Crystal
- 2 rows 21 diamonds each in each of 4 corners
- Salt & pepper shakers and carrier made by outside marketer
- 4 oz
- #4 or #62 stopper large size

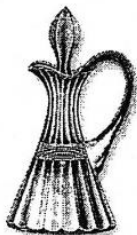


Paulson



150 Banded Flute

- 1907-1932
- Second pattern numbered 150
- Crystal
- Ground / polished bottoms



Bredehoft p. 104



150 Banded Flute

- 4 and 6 oz
- 5 1/8" & 6 1/8" to spout
- Marked on neck
- #1 Stopper





160 Locket on Chain

- 1898 to 1904
- Crystal and Emerald (rare)
- 4 lockets on bowl
- Unmarked
- #4 stopper



300 Peerless

- 1897 to 1956
- Crystal
- 8 panels, row of pleats on bottom
- Unmarked
- English registry number 350676

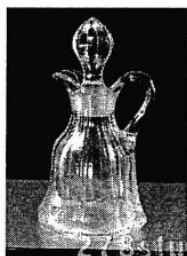


Vogel



300 Peerless

- Tygart Glass Company made similar pattern
- 2, 4, 6 and 8 oz
- #1 stopper

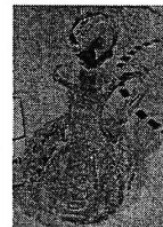


305 Punty Diamond Point

- 1900 to 1910
- Crystal
- 4 3/8" to spout
- 5 rows of punties
- Many unmarked
- 6 oz
- #4 stopper



Vogel



310 Ring Band

- 1898-1905
- Custard and Opal
- Ring band on middle & bottom
- Unmarked
- 6 oz
- #4 stopper



Bredehoft p. 66



315 Paneled Cane

- 1900-1904
- Crystal
- 6 plain panels, 6 beaded panels
- 6 1/2" to spout
- Unmarked
- 8 oz
- #1 stopper



Bredehoft p. 67



325 Pillows

- 1901 to 1912
- Crystal
- Unmarked



325 Pillows

- Similar to Westmoreland pattern by Gillinder
- Circles seem like small pillow
- 2 (rare) and 6 oz (scarce)
- #1 stopper



Bredehoft p 68



331 Colonial Panel

- Designed 1902
- Marketed 1907 to 1918
- Crystal
- 8 panels round bottom
- Marked on neck
- 4 and 6 oz
- #6 stopper



cBay



Bredehoft p. 70



333 Waldorf Astoria

- 1902 to 1914
- Crystal
- Plain ring band around small neck
- Marked on neck
- 2, 4 & 6 oz
- #1 Stopper



Vogel



335 Prince of Wales

- 1902 to 1912
- Crystal
- 4 upside plumes
- Unmarked
- 4 & 6 oz
- #4 stopper



337 Touraine

- 1902 to 193-
- Crystal
- Very plain
- Sometimes Red or gold flashing
- Unmarked
- 2, 4, 6 & 8 oz
- #1 Stopper



Bredehoft p. 74



339 / 339 ½
Continental

- 1905 to 1910
- Crystal
- Plain with 8 panels
- Marked ?
- 6 oz
- #1 Stopper



Bredehoft p. 75



341 / 341 ½
Puritan

- 1904 to 1956
- Crystal
- Reused number / renamed Old Williamsburg
- Eight panels
- Must be marked



Bredehoft p. 80



341 / 341 ½
Puritan

- 2, 4 & 6 oz
- #1 Stopper



Vogel



343
Sunburst

- 1903-1920
- Crystal
- 6 sunbursts with clear centers
- Unmarked
- 2, 4, & 6 oz
- #4 stopper



Bredehoft p. 84



351
Priscilla

- 1905-1933
- Crystal
- Must be Marked
- #3 Stopper



(Oil) Bredehoft p. 87



351
Priscilla

- Oil & Stopper
 - 2 oz
 - 4 oz
 - 6 oz
- Catsup & stopper
 - 10 oz



Catsup – Bredehoft p. 87



351 Priscilla Set

- Crystal
- Must be marked
- With salt & pepper shakers
- 6 oz
- #3 stopper

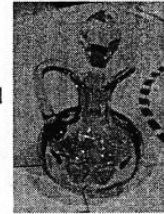


Paulson



352 Flat Panel

- 1907-1920
- Crystal
- 4 oz in Amber
- Must be marked
- 2, 4 & 6 oz
- #1 Stopper



Bredehoft P. 90



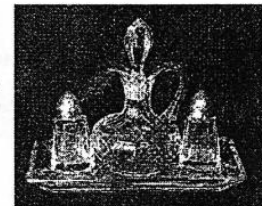
352 Flat Panel

- French Dressing
 - Crystal, Flamingo
 - 8 oz
 - 6" to spout
- Stoppers in Crystal, Flamingo & Moonglearn



352 Flat Panel Set

- Crystal
- Must be marked
- Salt & Pepper Shakers
- 4 oz
- #1 Stopper



Paulson



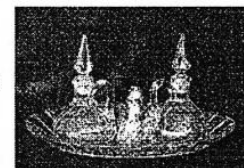
352 Flat Panel Set

- Vinegar & oil with tray
- Made for railroad dining cars



352 Flat Panel Sets

- Crystal
- Must be marked
- Salt & Pepper Shakers
- 4 oz
- #9 stopper

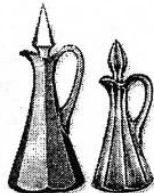


Paulson



353 Medium Flat Panel

- 1908-1939
- Crystal
- Marked
- 5 1/4", 6", 6 1/2", 6 3/4" & 7 1/4" to spout
- 2, 4, 6, 8 & 12 oz
- #6 or #8 stopper



Bredchoft p. 94



354 Wide Flat Panel

- 1908 to 1930
- Crystal
- Marked
- Oil Patent
 - No. 42594
 - Issued 6/4/1912
 - A. J. Sanford, designer

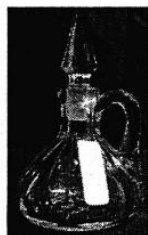


Bredchoft p. 96



354 Wide Flat Panel

- 2, 4, 6 & 8 oz
- #8 Stopper



Vogel



356 Little Prince

- 1908 to ??
- Crystal
- Top Flares all around, square handle, ring on neck
- Marked twice
- 6 oz
- #70 stopper



Paulson



357 Prison Stripe

- 1906
- Crystal
- Nine horizontal ribs
- Unmarked
- 4 & 6 oz
- #1 Stopper

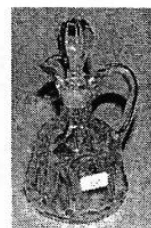


Bredchoft



365 Queen Ann

- 1907 to 1911
- Crystal
- 4 shields upside down
- Unmarked
- 2, 4 & 6 oz
- #3 stopper



Vogel



379 Urn

- 1907 to 1911
- Crystal
- 3 thin ribs top & bottom bowl
- Unmarked
- 4 & 6 oz
- #1 stopper



393 / 393 ½ Narrow Flute

- 1909-1935
- Crystal
- 4 ¼", 4 ¾" & 5 5/8" to spout
- Marked
- 2, 4 & 6 oz
- #10 Stopper

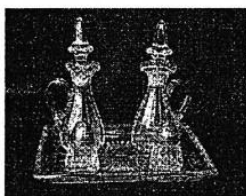


Bredenhof p. 118



393 Narrow Flute Set

- Crystal
- Marked
- Salt & Pepper Shakers
- 4 oz
- #10 Stopper



Paulson



394 / 395 Narrow Flute

- 1916 to 1933
- Crystal
- Plate molded to bottom
- Marked Inside
- 6 oz
- #9 stopper



Bredenhof p. 119



394 / 395 Narrow Flute

- French Dressing
 - Crystal
 - 5 ¾" to spout
 - 14 panels
 - 8 oz
 - Unmarked

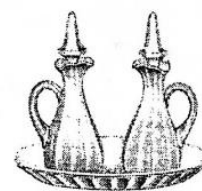


Bredenhof p. 120



394 Narrow Flute

- 394 No. 1 Condiment Set
 - 393 10" tray
 - 393 6oz oil, no. 10 cut or pressed stopper

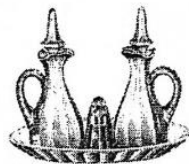


Vogel



395 Narrow Flute

- 395 No. 1 Condiment Set
 - 393 10" tray
 - 393 6 oz. oil, no. 10 cut or pressed stopper
 - 24 salt, no. 57 top
 - 24 pepper, no. 57 top

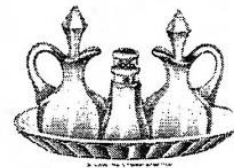


Vogel



395 Narrow Flute

- 395 No. 2 Condiment Set
 - 393 10" tray
 - 341 4oz oil, no. 2 cut or pressed stopper
 - 341 salt, no. 60 top
 - 341 pepper, no. 60 top



Vogel



395 Narrow Flute

- 395 No. 3 Condiment Set
 - 393 10" tray
 - 353 4oz oil, no. 8 cut or pressed stopper
 - 25 salt, no. 57 top
 - 25 pepper, no. 57 top

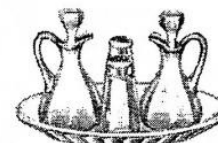


Vogel



395 Narrow Flute

- No. 4 Condiment Set
 - 393 10" tray
 - 351 4oz oil, no. 3 cut or pressed stopper
 - 351 salt, no. 60 top
 - 351 pepper, no. 60 top

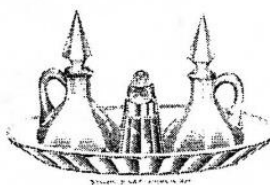


Vogel



395 Narrow Flute

- No. 5 Condiment Set
 - 393 10" tray
 - 354 2 oz oil, no. 8 stopper
 - 24 salt, no. 57 top
 - 24 pepper, no. 57 top

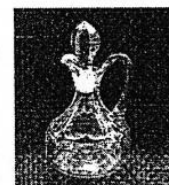


Vogel



397 Colonial Cupped Scallop

- 1909 to ??
- Crystal
- 3/8" raised band on scallop of bowl
- Unmarked
- 6 oz
- #1 stopper



Paulson



400
Colonial Scalloped

- 1909 to 1915
- Crystal
- 10 panels
- Marked
- 6 oz
- #1 Stopper
- Found in flamingo (?whimsey)



Bredehoft p. 112



406 / 407
Coarse Rib

- 1916 to 1933
- Crystal
- 5 3/4" to spout
- 18 inverted panels
- Marked on handle
- 6 oz
- #9 stopper



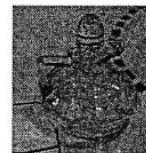
411 / 412 / 413
Tudor

- 1916 to 1950
- Crystal
- Marked on handle
- McKee made similar pattern
- 4 & 6 oz
- #7 stopper



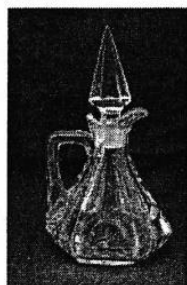
417 / 418
Double Rib Panel

- 1923 to 1935
- Crystal
- 3" to spout
- Double ribs 1/2" apart
- Marked on handle
- 3 oz
- Rounded stopper (may be moongleam)



429
Plain Panel Recess

- 1910 to 1925
- Crystal
- Patent
 - No. 43853
 - Granted 4/15/193
 - Andrew . Sanford, Designer



429
Plain Panel Recess

- Plain thick glass, often cut
- Marked
- 6 oz
- #9 Stopper





433
Greek Key

- 1911 to 1938
- Crystal
- 4 ¼", 4 ¾", & 5 ½" to spout
- Unmarked
- Bottoms ground / polished



Bredehoft p. 126



433
Greek Key

- 2, 4 & 6 Oz
- #6 Stopper



433 ½
Greek Key

- 1911 to 1938
- 3", 3 ½", & 3 ¾" to spout
- Unmarked
- 2, 4 & 6 oz
- #9 Stopper



Bredehoft p. 127



437
Ribbon Candy

- Ca 1912
- Crystal
- 6 3/8" to spout
- Unmarked
- Bottoms ground / polished
- 6 oz
- #10 stopper



Paulson



439
Raised Loop

- 1915 to 1915
- Crystal
- Convex or raised loops
- Unmarked
- Bottoms ground / polished
- 6 oz
- #9 Stopper



Bredehoft p. 128



451 / 452
Cross Lined Flute

- 1913 to 1934
- Crystal
- 3 grooves around bowl
- Marked
- 6 oz
- #9 Stopper





461 Convex Circle

- 1920 to ??
- Called 7037 Temple by Vogel
- Crystal
- 4 1/2" to spout
- 3 section panels
- Marked
- 6 oz
- #9 Stopper



Paulson



466 Panel-Double Pleat

- 1915 to 1932
- Crystal
- 4 5/8" to spout
- Very plain bottom
- Marked
- 6 oz
- #9 Stopper



Paulson



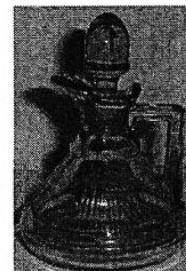
473 Narrow Flute with Rim

- 1915 to 1927
- Crystal
- 32 flutes, panels above
- Most have ground and polished bottoms
- Marked
- 2, 4 & 6 oz
- #9 Stopper



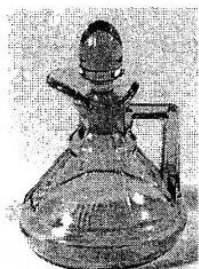
1170 Pleat and Panel

- 1925 to 1942
- Crystal, Moongleam, Flamingo & Amber



1170 Pleat and Panel

- 3 oz
- Pressed stopper
- Stopper same color as cruet



Brederhoft p. 27



1184 Yeoman

- 1913 to 1938
- Colors:
 - Crystal
 - Moongleam
 - Flamingo
 - Sahara
 - Marigold
- Diamond optic
- Marked



eBay



1184 Yeomen

- 2 & 4 oz
- #1 Stopper

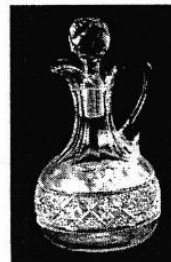


Vogel



1200 Cut Block

- 1896 to 1900
- Crystal
- 5 1/8" to spout
- Unmarked
- Not Reproduced
- 6 oz
- Stopper Pressed



Bredchoff p. 32



1201 Fandango (Diamond Swag)

- 1896 to 1909
- Crystal
- 4 1/2", 5 1/4", 5 5/8" to spout
- Unmarked
- Not Reproduced

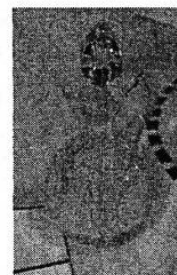


Vogel



1201 Fandango

- 4, 6 & 8 oz
- #4 Stopper



1205 / 1205 1/2 Fancy Loop

- 1897 to 1910
- Crystal
- 8 loops with squares within
- Unmarked
- 6 oz.
- #4 Stopper

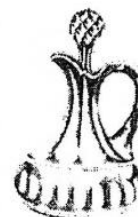


Vogel



1220 Punty Band

- 1897 to 1910
- Crystal
- 24 punties on band
- 9 panels
- Unmarked
- May have registry number 320925





1220 Punty Band

- 6 Oz
- #4 Stopper

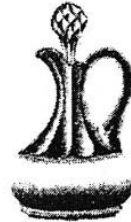


Vogel



1225 Plain Band

- 1897 to 1910
- Crystal
- Sawtooth bands on top & bottom
- Unmarked



1225 Plain Band

- 4 oz & 6 oz
- #4 Stopper



Bredehoft p. 45



1235 Beaded Panel & Sunburst

- 1898 to 1913
- Crystal
- 4", 4 1/2" & 5" to spout
- Unmarked
- 4, 6 & 8 oz
- #4 or #62 stopper



eBay



1235 Beaded Panel & Sunburst

- Catsup
- 5" to spout



Vogel



1250 Groove and Slash

- 1899 to 1906
- Crystal
- 16 grooves, raised ones are slashed
- Unmarked
- 6 oz
- #4 Stopper



eBay



Bredehoft p. 49



1252 Twist

- 1928 to 1932
- Crystal, Moongleam, Flamingo, Marigold, & Sahara (limited)



1252 Twist

- 2.5 & 4 Oz
- #78 Stopper
- Stopper same color as cruet



1252 Twist

- 1928 to 1932
- 8 oz Oil & Vinegar
- Crystal, Flamingo, Sahara, & Marigold
- Stopper same color as cruet
- Marked



Paulson



1255 Pineapple and Fan

- 1898 to 1907
- Crystal & Emerald
- Fan with 5 grooves
- Unmarked
- 6 oz
- #4 Stopper



1280 Winged Scroll

- 1899 to 1904
- Crystal, Custard & Emerald
- 4 winged scrolls with 3 beads
- Unmarked
- 6 oz
- #4 Stopper



1295 Beaded Swag

- 1899 to 1904
- Crystal, Emerald & Opal
- 6 swags on bowl, 16 beads each
- Often seen with painted flowers
- Unmarked
- 6 oz
- #4 Stopper





1401
Empress

- 1928 to 1934
- Crystal, Moongleam, Flamingo & Sahara
- Unmarked
- 6 oz
- #83 Stopper
- Stopper same color as cruet



1404
Old Sandwich

- 1937 to 1954
- Crystal, Moongleam, Flamingo & Sahara
- 4 Punties in a row
- Marked
- 2.5 oz
- #85 Stopper



1404
Old Sandwich

- Catsup
- 8 oz
- Crystal, Moongleam, Flamingo & Sarah
- Marked
- #3 Clear Stopper



Paulson



1405
Ipswich

- 1931 to 1946
- Crystal, Moongleam, Flamingo & Sahara
- Also seen in Crystal with Flamingo foot
- 4 Swirls bowl
- Marked
- 2 oz
- #86 Stopper
- Stopper same color as cruet



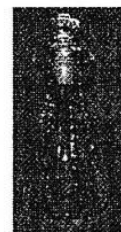
1425
Victorian

- 1933 to 1953
- Crystal & Sahara (rare)
- 3 rows of squares
- 3 7/8" to spout
- Marked
- 3 oz
- #7 Stopper



1425
Victorian

- 8 Oz Oil & Vinegar
 - 1933 to 1953
 - Crystal & Sahara
 - 11 rows of squares
 - Marked
 - # 7 Stopper



Paulson



1425
Victorian

- Crystal
- Marked
- Toothpicks (shot glass)
- Salt & Pepper shakers
- Assembled in metal carrier by outside marketer
- 3 oz
- #7 stopper

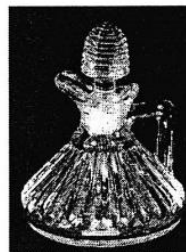


Paulson



1469
Ridgeleigh

- 1933 to 1944
- Crystal
- 28 rays on squatty bowl
- Square handle
- Unmarked

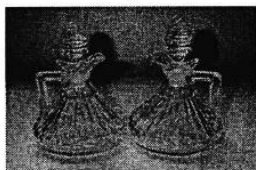


Bredehoft p.243



1469
Ridgeleigh

- Fenton & Imperial made similar patterns
- 3 oz
- #103 Stopper



1469
Ridgeleigh

- 8 oz Oil & Vinegar
- Crystal
- Unmarked
- #100 Stopper



Paulson



1483
Stanhope

- 1936 to 1937
- Crystal
- Small round handle with plastic inserts
 - Black, Blue, Red, White & Yellow
- Unmarked
- 3 oz
- #106 Stopper



1485
Saturn

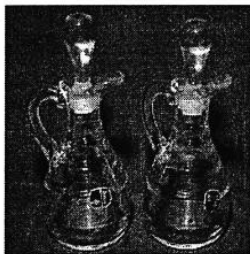
- 1936 to 1940
- Crystal & Zircon
- Squat
- Marked
- 2 oz earlier issue
- #1 stopper





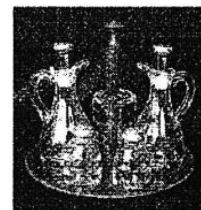
1485 Saturn

- 1946 to 1956
- Crystal, Limelight & Dawn
- Tall
- 4 oz later issue
- Teardrop Stopper



1485 Saturn Set

- Crystal
- Marked
- Salt & Pepper Shakers
- Mustard jar
- Wood carrier made & assembled by outside marketer
- 4 oz
- Modified Stopper



Paulson



1485 Saturn-Cruet Set (#5 Domesti-Cater Set)

- Crystal
- Marked
- Wire & wood set assembled by Heisey
- 4 oz
- Teardrop Stopper



Paulson



1489 Puritan

- 1937 to 1957
- Crystal
- 8 oz Oil & Vinegar
- Square with tapered sides
- Thick glass
- Unmarked
- #113 Stopper



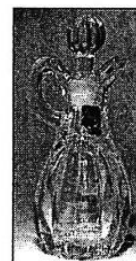
1503 Crystolite

- 1937 to 1957
- Crystal
- Unmarked
- 3 oz
- #110 Stopper



1503 Crystolite

- Tall cruet of same name only made by Imperial (*Heisey Cruet Pocket Guide by Homer Paulsen*)





1506
Whirlpool (Provincial)

- 1938 to 1953
- Crystal
- 4 oz
- #6 Stopper



1506
Whirlpool (Provincial)

- 1938 to 1953
- 6 oz Oil & Vinegar
- Crystal
- Marked
- #1 Stopper (large)



eBay



1509
Queen Ann (new)

- 1937 to 1948
- Crystal
- Same as 1401 with optic added
- Sometimes issued with 501 Bella Le Rose decoration
- Unmarked
- 4 oz
- #83 Stopper



Paulson



1519
Orchid on Waverly

- 1940 to 1957
- Crystal
- Tall & thin
- Often etched
- Occasionally with cutting
 - 507 Orchid
 - 515 Heisey Rose
 - 965 Narcissus
- Unmarked
- 3 oz
- #122 Stopper



1540 / 5040
Lariat

- 1942 to 1957
- Crystal
- 5 1/4" to spout with rope-like handle
- Unmarked
- 4 oz
- Curved rope-like #133 Stopper



1540
Lariat

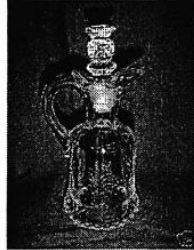
- 1942 to 1957
- Crystal
- Often sold as cologne bottle
- Unmarked
- 4 oz
- Curved rope-like #133 stopper





1567 / 5067 Plantation

- 1948 to 1957
- Crystal
- 4 pineapples on bowl
- Issued with 516 Plantation Ivy decoration
- Variety with no pineapples on bowl very rare
- Unmarked
- 3 oz
- Pineapple #125 stopper



1776 Kalonyl

- 1906 to 1908
- Crystal
- 8 panels with oblong shields
- Unmarked
- Ground / Polished bottoms
- 2, 4 & 6 oz
- #1 Stopper

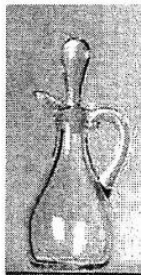


Bredehoft p. 100



1951 Cabochen

- 1941 to 1956
- Crystal
- Very plain rounded middle
- Square bottom
- Issued with cuttings
 - 980 Moonglo
 - 1025 Arcadia
- Unmarked
- 3 oz
- #101 Stopper



4041 Oil No Handle

- 1914 to 1929
- Crystal
- Plain double spout
- Unmarked
- 8 oz
- #62 Stopper

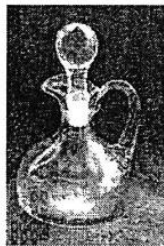


Paulson



4042 Reynolds

- 1919 to 1937
- Crystal, Flamingo and Moongleam
- Very plain, heavy applied handle
- Unmarked
- 6 oz
- #62 stopper
- Moongleam is on handle only



Paulson



4043 Johnson

- 1914 to 1920
- Crystal
- 5 1/8" to spout
- Upside down pear-sham
- Unmarked
- 3 oz
- Teardrop Stopper



Paulson



4048 Cut Neck

- 1913 to 1917
- Crystal
- 5 1/2" to spout
- 4 panels on neck
- Unmarked
- 6 oz
- #67 stopper



Paulson



4056 Blown Oil

- 1914 to 1929
- Crystal
- 5 1/8" to spout
- 3 5/8" wide base
- Unmarked
- 8 oz
- #2 or #4 stopper



Paulson



4057 Blown Oil

- 1914 to 1929
- Crystal
- 3 5/8" to base
- Bowl bulges wider than base
- Unmarked
- 8 oz
- #4 or #62 stopper



Paulson



5031 Oil & Vinegar

- Crystal
- 4 1/8" to spout
- 2 1/4" across spout
- Plain thin glass
- Often issued with cutting
 - 507 Orchid
 - 515 Rose
 - 941 Barcelona
 - 941 Maryland
- 1083 Jungle Flower Cuttings
- Unmarked
- 8 oz
- #80 Stopper



Listed on eBay as
Orchid



Paulson



6009A Roundelay

- 1955 to 1957
- Crystal & Dawn
- Plain
- 4 7/8" to top; 5/8" across top
- Unmarked
- 6 oz
- Black rubber stopper



Paulson